



Maternally **DRIVEN** Performance **DELIVERED**

Saturday, February 18, 2017 • 11:59 AM Sharp!

Aberdeen Livestock Sales Co. (West Barn) • 38458 133rd Street • Aberdeen, SD 57401

Maternally **DRIVEN** Performance **DELIVERED**

“Maternally Driven, Performance Delivered.”

We are driven to offer females with longevity that produce performance oriented cattle and bulls that will add pounds and growth to your calves. The cornerstone of our program is producing cattle with a spread between birth and growth. The bulls and females that we have put together for you in this sale do just that.

With today’s current environment and commodities, it offers some challenges being in the cattle business. But, we strive to continue to offer our best genetics. It’s a great time to be in the Simmental and Angus seedstock business – with great benefits being received from cross breeding and heterosis as it is delivering increased performance and fertility.

We’ve brought some new genetics into our program and are very excited with the results and we continue to use the proven genetics of our program. We feel this set of bulls and females is one of the best sets we have ever offered top to bottom.

Now is the time to strengthen the genetics of your cow herd with proven genetics that will help you attain your breeding goals. Whether you sell your calves as weaned, back grounded or fed, we have the genetics to meet your demands.

**WE LOOK FORWARD
TO YOUR VISIT
ON SATURDAY,
FEBRUARY 18TH!**



SALE SCHEDULE

Friday, February 17, 2017

All day viewing of sale cattle

Saturday, February 18, 2017

8:00 am. Sale cattle viewing

11:00 am. Complimentary Lunch

11:59 am. 30th Annual Kappes Simmental Sale

Approx. 3 pm-immediately following sale Cattlemen’s
Social Hors d’oeuvres & refreshments

Kappes Simmental

10368 357th Ave., Long Lake, SD 57401

Neal Kappes Cell 605-380-8766 or evenings 605-577-6225

Bruce Kappes 605-380-1303

Sterling Kappes 605-216-3581

sterling.kappes@jacks.sdstate.edu

www.thebullpeople.com

.....
PROFESSIONAL SALE MANAGEMENT

Eberspacher ENTERPRISES INC.

Val and Lori Eberspacher

2904 County Road 6, Marshall, MN 56258

Val Eberspacher Cell 612-805-7405

Kelly Schmidt Cell 406-599-2395

Fax 507-532-9457 • sales@ebersale.com

www.ebersale.com

Saturday, February 18, 2017 • 11:59 AM Sharp!



Aberdeen Livestock Sales Co. (West Barn)
 38458 133rd St., Aberdeen, SD 57401



**Selling 132 Lots of Simmental, SimAngus™
 and Angus Genetics • Performance Tested
 Bulls & Elite Bred Heifers**

SALE HEADQUARTERS: Ramkota 605-229-4040
 1400 8th Ave NW (N Hwy 12) • Aberdeen SD 57401 • Ask for Kappes Simmental Block

OTHER AREA MOTELS:
 Super 8 West 605-225-1711 • Holiday Inn Express 605-725-4000
 Comfort Inn 605-226-0097 • Hampton Inn & Suites 605-262-2600

AIR TRANSPORTATION: Aberdeen Regional Airport is serviced by Delta KLM, 800-225-2525. Rental cars are available through Avis at 605-225-9153 or Hertz 605-225-4163. Rental offices located at airport terminal.

TERMS AND CONDITIONS: 1) All cattle will sell under the Suggested Sale Terms & Conditions of the American Simmental Association and the American Angus Association. These terms and conditions will be available sale day. 2) We guarantee our cattle to be breeders but reserve the right to test any animal that may be returned to us as a non-breeder for one hundred eighty (180) days before making an adjustment. Cattle will be returned at the buyer's expense, and if declared a sound breeder by a competent veterinarian, the cattle will be returned to the buyer's ranch at the buyer's expense. In case an adjustment is required it will be made with a replacement of equal value to the animal in question or credit on the purchase of another animal. 3) Any death or injury after the animal is sold is at the buyer's risk.

LIVESTOCK INSURANCE: Insurance available sale day through sale management.

ANNOUNCEMENTS: Announcements made sale day and from the auction block take precedence over printed material in the catalog or other printed material associated with this sale. Anyone attending this sale attends at his or her own risk. Kappes Simmentals, Eberspacher ENT. or any other sale force will not be held responsible for any personal injury for attending this sale.

UPDATES & SALE ORDER: Additional information and sale order can be found on the Eberspacher Enterprises Inc. website or Facebook page. Like us to receive all sale updates automatically. Download the EE smart phone APP for current sale info!

EPDS: Please note that EPDs may change from the time the sale catalog is printed until registration paper is transferred. EPDs listed are the new Spring 2017 numbers.

TRUCKING: BULLS – Haul your bulls home sale day and receive a \$30 per head discount!

ASSISTED DELIVERY TERMS: See page 37 for full details.

AUCTIONEER: Col. Jim Birdwell. 580-549-6636 Office or 580-695-2352 Mobile

MARKETING REPRESENTATIVES:

Val Eberspacher, EE Sales.	612-805-7405
Kelly Schmidt, EE Sales.	406-599-2395
Dustin Carter	712-898-9972
Colton Buus, ASA.	605-214-3532
Justin Dikoff, DV Auction	605-290-0635
Nicole Dikoff, DV Auction	605-290-0634
BJ Hansen	605-228-6199
Kent Jaecke	405-408-2440
Jay Hennessy.	701-720-4685



Retaining 1/3 semen interest on all bulls selling unless otherwise noted. For more information contact Kappes Simmental!

Scrotal measurements data will be listed online when available at www.thebullpeople.com

HERD HEALTH

IN JANUARY:

- Bred Females & Sale Bred Heifers: Guardian-ScourGuard

AT BIRTH:

- Calves: Alpha 7

IN APRIL:

- Cows: Express FP 3-VL5
- Baby Calves: Pulmo Guard PHM-1
- Yearling Heifers: Express FP5-VL5

IN AUGUST:

- Bred Heifers: Ultrasounded for Pregnancy

IN SEPTEMBER:

- Calves Heifers: Bangs Vaccinated-Vision 7, Pulmo Guard PHM-1 and Vira-Shield 6 +Som

AT WEANING:

- Poured w/ Cylence-Lice Control
- Express 5-HS
- Safeguard deworming pellets

IN OCTOBER:

- Bred Heifers: Guardian- Scour Guard

IN JANUARY:

- Bulls: Ultrasounded for Carcass, Scrotal Circumference measured and Clean Up-Lice Control

We invite you to join us for our sale on Saturday, February 18th to view our breeding program and enjoy cattle hospitality immediately following the sale!

**Sale Day Phones:
 888-246-9952 or
 605-225-2062**



KAPPES SIMMENTAL... 30 YEARS OF SALES!

Maternally **DRIVEN** *Performance* **DELIVERED**

2 • BLACK SIMMENTAL BULLS • LOT 1



Kappes Pilgrim D174

Hetero. Black Homo. Polled Purebred Bull
 ASA#(3106206) BD: 3-20-16 Tattoo: D174

CNS Dream On L186
 WS Pilgrim H182U
 WS Marla 276M
 PVF Preferred Edge 717G
 Kappes Sadie M166
 Kappes Stop Light J35

BW	95 ET	CE	11	DOC	4.3
BWR	N/A	BW	1.7	CW	26.2
WW	832	WW	69	YG	-.32
WWR	N/A	YW	92	Marb	.07
YW	1396	ADG	.14	BF	-.056
YWR	N/A	MCE	13	REA	.75
ADG	3.52	Milk	23	API	126
		MWW	57	TI	70
		Stay	14		

Kappes Pilgrim D174 combines both phenotype and performance. He is long sided, clean made through his front one-third, bold through the center portion of his body, square hipped, big footed and sound structured. He's one of our favorites to date out of Sadie M166 and is sure to make an impact with his offspring.



Kappes Sadie M166, Dam



Kappes Super Liner B89, \$8,500 Maternal Brother



WS Pilgrim H182U, Sire



Come As U R Red Rocket, Sire

FULL BROTHERS BY COME AS U R RED ROCKET & KAPPES SADIE M166



Kappes R. Rock D85

Red Homo. Polled Purebred Bull
 ASA#(3106117) BD: 3-12-16 Tattoo: D85

BW	98 ET	CE	5	DOC	3.9
BWR	N/A	BW	5.0	CW	52.3
WW	840	WW	85	YG	-.29
WWR	N/A	YW	127	Marb	-.24
YW	1479	ADG	.27	BF	-.057
YWR	N/A	MCE	12	REA	.99
ADG	3.99	Milk	22	API	100
		MWW	64	TI	67
		Stay	12		



Kappes R. Rock D107

Red Homo. Polled Purebred Bull
 ASA#(3106139) BD: 3-14-16 Tattoo: D107

BW	99 ET	CE	4	DOC	3.9
BWR	N/A	BW	5.2	CW	53.1
WW	840	WW	83	YG	-.26
WWR	N/A	YW	128	Marb	-.27
YW	1399	ADG	.28	BF	-.055
YWR	N/A	MCE	11	REA	.93
ADG	3.50	Milk	22	API	97
		MWW	64	TI	65
		Stay	12		

Pedigree for Lots 2-3:
 MRL 130Y
 Come As U R Red Rocket
 Miss Xciting 14X
 PVF Preferred Edge 717G
 Kappes Sadie M166
 Kappes Stop Light J35

These two Red Rocket bulls are beasts. Out of the great Sadie M166 cow and outcross genetics to popular red Simmental sires. If you're looking to add pounds and performance these two bulls will get it done. With added muscle, skeletal width, power and performance they are sure to make their mark.

Mr. TR Hammer 308A ET, Sire



Kappes Hamer D88

Black Baldy Dbl. Polled Purebred Bull
 ASA#(3106120) BD: 3-12-16 Tattoo: D88

BW	89 ET	CE	8	DOC	5.3
BWR	N/A	BW	1.7	CW	44.9
WW	768	WW	81	YG	-.34
WWR	N/A	YW	123	Marb	-.01
YW	1261	ADG	.26	BF	-.075
YWR	N/A	MCE	11	REA	.92
ADG	3.08	Milk	20	API	115
		MWW	61	TI	75
		Stay	9		

Mr. NLC Upgrade U8676
 Mr. TR Hammer 308A ET
 SVF/HS Expecting A Dream
 PVF Preferred Edge 717G
 Kappes Sadie M166
 Kappes Stop Light J35

A baldy Hammer son that is stout made, square hipped, heavy muscled, and long sided.



Kappes Comm D102

Black Homo. Polled Purebred Bull
 ASA#(3106134) BD: 3-14-16 Tattoo: D102

Soggy made, moderate framed, rugged built.

3D Blk Full Throttle 483
 LFE Commissioner 811Z
 LFE BS Lass 189X
 PVF Preferred Edge 717G
 Kappes Sadie M166
 Kappes Stop Light J35

BW	89 ET	CE	9	DOC	4.5
BWR	N/A	BW	2.6	CW	32.8
WW	699	WW	64	YG	-.28
WWR	N/A	YW	99	Marb	-.21
YW	1277	ADG	.22	BF	-.037
YWR	N/A	MCE	11	REA	.84
ADG	3.61	Milk	22	API	99
		MWW	54	TI	59
		Stay	10		



KS Miss Sequoia
 Y770, Dam



W/C Miss 4770, Full Sister



W/C Loaded Up 1119Y, Sire



Kappes L Up D92

Red Homo. Polled Purebred Bull
 ASA#(3106124) BD: 3-13-16 Tattoo: D92

Loaded Up is sure making his mark in the Simmental breed. This red son of his is bold in his upper and lower rib, long sided, clean made through his front end, and sound structured. If you're looking to raise eye appealing cattle with a punch, he's your bull.

Remington Lock N Load 54U
 W/C Loaded Up 1119Y
 Aubreys Black Blaze III
 Hooks/KS Sequoia 35S
 KS Miss Sequoia Y770
 ASR Ms. Super Baldy U851

BW	90 ET	CE	8	DOC	11.4
BWR	N/A	BW	2.5	CW	22.4
WW	809	WW	60	YG	-.36
WWR	N/A	YW	82	Marb	.12
YW	1350	ADG	.14	BF	-.045
YWR	N/A	MCE	9	REA	.92
ADG	3.39	Milk	19	API	102
		MWW	49	TI	64
		Stay	5		

Sons of Kappes Megatron A12

Hetero. Black Homo. Polled Purebred Bull ASA#2713755 BD: 3-2-13 Tattoo: A12
 WAGR Dream Catcher 03R x SWC Ruby Ynona 139Y
 EPDs: 13 -1.1 69 105 .23 9 21 55 12 10.1 Carcass: 30.5 -.45 .30 -.055 1.23 145 81



Val



Kappes Mega D116

Black Dbl. Polled Purebred Bull

ASA#(3106148) BD: 3-15-16 Twin Tattoo: D116

WAGR Dream Catcher 03R
 Kappes Megatron A12
 SWC Ruby Ynona 139Y
 Swain Dream Weaver 728T
 Kappes Nina U321 Y277
 Kappes Nina U321

BW	80	CE	13	DOC	11.6
BWR	N/A	BW	0	CW	32.1
WW	758	WW	68	YG	-.34
WWR	N/A	YW	105	Marb	.29
YW	1383	ADG	.23	BF	-.042
YWR	N/A	MCE	12	REA	1.01
ADG	3.91	Milk	24	API	147
		MWW	58	TI	78
		Stay	15		

In terms of tying phenotype and a good set of EPD together, he sure does it. He is so elegant about his head and neck, big backed, soft sided, stout constructed, and flexible off of both ends of his skeleton. While being in the top twenty percent on both BW and YW and in the top ten percent API. Megatron has sure made his mark in our herd and this son is proof of it.



Kappes Mega D356

Black Dbl. Polled Purebred Bull

ASA#(3106387) BD: 4-3-16 Tattoo: D356

BW	85	CE	12	DOC	10.1	WAGR Dream Catcher 03R
BWR	102	BW	.2	CW	27.9	Kappes Megatron A12
WW	803	WW	69	YG	-.40	SWC Ruby Ynona 139Y
WWR	111	YW	98	Marb	.11	SS Ebony's Masterpiece
YW	1291	ADG	.18	BF	-.040	Kappes Zola U39
YWR	101	MCE	12	REA	1.16	Kappes Zola S240
ADG	3.05	Milk	26	API	133	
		MWW	60	TI	74	
		Stay	13			

Boy, this one's got a cool look. You sure have to appreciate the way he ties his neck out of his shoulder, and balances up. He's level built and sound structured. If you're looking to inject phenotype, take a look at him.



Kappes Mega D206

Black Baldy Dbl. Polled Purebred Bull

ASA#(3106238) BD: 3-21-16 Tattoo: D206

BW	108	CE	11	DOC	11.2	WAGR Dream Catcher 03R
BWR	76	BW	1.7	CW	16.5	Kappes Megatron A12
WW	742	WW	60	YG	-.43	SWC Ruby Ynona 139Y
WWR	107	YW	75	Marb	.20	SS Ebony's Masterpiece
YW	1174	ADG	.10	BF	-.053	Kappes Lacey T91
YWR	92	MCE	10	REA	1.00	Kappes Lacey N271
ADG	2.70	Milk	23	API	128	
		MWW	53	TI	68	
		Stay	13			

Moderate framed, soft sided, big boned.



Kappes Mega D59

Black Blaze Polled/Scurred Purebred Bull

ASA#(3106092) BD: 3-6-16 Twin Tattoo: D59

WAGR Dream Catcher 03R
 Kappes Megatron A12
 SWC Ruby Ynona 139Y
 Wheatland High Octane 169Y
 Kappes Maxi Lou Z608 B47
 Kappes Maxi Lou Z608

BW	68	CE	9	DOC	10.9
BWR	N/A	BW	.6	CW	27.2
WW	675	WW	65	YG	-.38
WWR	N/A	YW	95	Marb	.22
YW	1320	ADG	.19	BF	-.044
YWR	N/A	MCE	6	REA	1.06
ADG	4.05	Milk	21	API	126
		MWW	54	TI	73
		Stay	10		



Kappes Sadie T635, Dam



Kappes Mega D114

Hetero. Black Homo. Polled Purebred Bull

ASA#(3106146) BD: 3-15-16 Tattoo: D114

WAGR Dream Catcher 03R
 Kappes Megatron A12
 SWC Ruby Ynona 139Y
 Daume Lucky Deal L101
 Kappes Sadie T635
 Kappes Sadie M166

BW	89 ET	CE	9	DOC	7.5
BWR	N/A	BW	2.1	CW	41.9
WW	807	WW	76	YG	-.47
WWR	N/A	YW	116	Marb	-.05
YW	1424	ADG	.25	BF	-.06
YWR	N/A	MCE	12	REA	1.4
ADG	3.85	Milk	27	API	116
		MWW	65	TI	72
		Stay	11		

Here's a Megatron ET calf out of one of our leading donors, Sadie T635. He is as long as a well rope, big footed, square hipped, clean, with added power and performance.



Kappes Mega D187

Black Blaze Polled/Scurred Purebred Bull

ASA#(3106219) BD: 3-20-16 Tattoo: D187

WAGR Dream Catcher 03R
 Kappes Megatron A12
 SWC Ruby Ynona 139Y
 Wheatland High Octane 169Y
 Kappes Sadie T635 B101
 Kappes Sadie T635

BW	86	CE	8	DOC	9.3
BWR	101	BW	1.3	CW	42.5
WW	772	WW	77	YG	-.44
WWR	111	YW	119	Marb	.03
YW	1396	ADG	.26	BF	-.055
YWR	109	MCE	9	REA	1.33
ADG	3.91	Milk	23	API	119
		MWW	62	TI	75
		Stay	10		

A stout made, powerfully built Megatron son out of a High Octane x T635 daughter.

This sale will be broadcast live on the internet! **DVAuction** Broadcasting Real-Time Auctions



SWC Ruby Ynona 139Y, Dam



Kappes Big Ticket C521, \$17,000
Full Sibling



Kappes LNL D111

Black Homo. Polled Purebred Bull

ASA#(3106143) BD: 3-15-16 Tattoo: D111

BW	84 ET	CE	9	DOC	11.3
BWR	N/A	BW	.8	CW	37.1
WW	707	WW	63	YG	-.52
WWR	N/A	YW	110	Marb	.06
YW	1174	ADG	.29	BF	-.081
YWR	N/A	MCE	9	REA	1.32
ADG	2.92	Milk	17	API	116
		MWW	49	TI	69
		Stay	7		

Remington On Target 2S
Remington Lock N Load 54U
Bar15 Miss Knight 78E-51G
Mr. NLC Upgrade U8676
SWC Ruby Ynona 139Y
JM Miss Olivia-L36



Remington Lock N Load 54U, Sire

Here's a solid black full sib to our second high selling bull last year, Kappes Big Ticket, who went to Heartland Simmentals in Iowa. He's big footed, long spinned, soft sided, and soft pasterned.



Kappes H Oct D189

Homo. Black Homo. Polled Purebred Bull

ASA#(3106221) BD: 3-20-16 Tattoo: D189

BW	102 ET	CE	5	DOC	11.6
BWR	N/A	BW	1.8	CW	35.4
WW	775	WW	69	YG	-.46
WWR	N/A	YW	106	Marb	.01
YW	1315	ADG	.23	BF	-.063
YWR	N/A	MCE	5	REA	1.25
ADG	3.38	Milk	20	API	104
		MWW	54	TI	68
		Stay	7		

Wheatland Predator 922W
Wheatland High Octane 169Y
Wheatland Lady 351N
Mr. NLC Upgrade U8676
SWC Ruby Ynona 139Y
JM Miss Olivia-L36



Wheatland High Octane, Sire

A stout made maternal sib to Kappes Megatron A12.



Sons of CLRS Archie 136 A

Red Homo. Polled Purebred Bull ASA#2735700 BD: 3-1-13 Tattoo: 136A
 WS Beef King W107 x Hook's Ultimatum 36U
 EPDs: 8 4.4 75 112 .23 8 22 60 11 11.9 Carcass: 42.5 -.26 .30 -.043 .86 128 76



LOT 15

Kappes Archie D224

Black Homo. Polled Purebred Bull
 ASA#(3106256) BD: 3-23-16 Tattoo: D224

WS Beef King W107
 CLRS Archie 136 A
 Hook's Ultimatum 36U
 Kappes Trailblazer S516
 Kappes Zola P243 X294
 Kappes Zola P243

BW	96	CE	7	DOC	7.7
BWR	90	BW	4.5	CW	51.0
WW	858	WW	87	YG	-.26
WWR	119	YW	126	Marb	.05
YW	1396	ADG	.25	BF	-.064
YWR	109	MCE	10	REA	.82
ADG	3.37	Milk	22	API	118
		MWW	66	TI	76
		Stay	11		

In terms of adding power and performance, these Archie cattle flat get it done. This solid black son of his is long sided, deep bodied, heavy muscled, stout pinned and wide constructed. He is in the top one percent of the breed in WW, YW, and CW. If you're looking to add pounds and performance, here he is.

LOT 16

Kappes Archie D280

Red Dbl. Polled Purebred Bull
 ASA#(3106311) BD: 3-26-16 Tattoo: D280

BW	91	CE	9	DOC	8.4
BWR	95	BW	3.1	CW	47.4
WW	796	WW	81	YG	-.31
WWR	110	YW	123	Marb	.09
YW	1394	ADG	.27	BF	-.06
YWR	109	MCE	12	REA	.95
ADG	3.76	Milk	27	API	124
		MWW	68	TI	77
		Stay	11		

WS Beef King W107
 CLRS Archie 136 A
 Hook's Ultimatum 36U
 OLF Thor X54
 Kappes Trinia W371 A216
 Kappes Trinia R103 W371

RED

Stout made, long sided, wide built Archie son.

LOT 17

Kappes Archie D296

Red Dbl. Polled Purebred Bull
 ASA#(3106327) BD: 3-28-16 Tattoo: D296

BW	99	CE	7	DOC	9.2
BWR	86	BW	4.8	CW	45.6
WW	791	WW	78	YG	-.27
WWR	109	YW	116	Marb	.05
YW	1386	ADG	.24	BF	-.06
YWR	108	MCE	12	REA	.82
ADG	3.73	Milk	24	API	114
		MWW	63	TI	71
		Stay	11		

WS Beef King W107
 CLRS Archie 136 A
 Hook's Ultimatum 36U
 GW Stop Light 024F
 Kappes Noel R S136 Y170
 Kappes Noel S136

RED

LOT 18

Kappes Archie D424

Red Dbl. Polled Purebred Bull
 ASA#(3106455) BD: 4-18-16 Tattoo: D424

WS Beef King W107
 CLRS Archie 136 A
 Hook's Ultimatum 36U
 CNS Dream On L186
 JBS Miss Dream On 703X
 JBS Miss G. Design 504T

BW	82	CE	12	DOC	11.3
BWR	106	BW	1.8	CW	32.4
WW	781	WW	75	YG	-.27
WWR	108	YW	102	Marb	.29
YW	1242	ADG	.17	BF	-.047
YWR	N/A	MCE	10	REA	.77
ADG	2.88	Milk	19	API	135
		MWW	56	TI	78
		Stay	11		

RED Moderate framed, long sided, soft sided.



Kappes Archie D328

Black Dbl. Polled Purebred Bull

ASA#(3106359) BD: 3-31-16 Tattoo: D328

BW	93	CE	9	DOC	10.5
BWR	93	BW	3.8	CW	39.6
WW	754	WW	75	YG	-.27
WWR	104	YW	109	Marb	.22
YW	1310	ADG	.21	BF	-.05
YWR	102	MCE	8	REA	.81
ADG	3.49	Milk	27	API	130
		MWW	64	TI	75
		Stay	13		

WS Beef King W107
 CLRS Archie 136 A
 Hook's Ultimatum 36U
 Kappes Ironman W619
 Kappes Paige M149 Y467
 Kappes Paige M149

High performing, level built bull that is in the top ten percent on WW and top fifteen on YW.



Kappes Archie D321

Black Homo. Polled Purebred Bull

ASA#(3106352) BD: 3-30-16 Tattoo: D321

BW	87	CE	10	DOC	10.8
BWR	100	BW	3.0	CW	47.0
WW	818	WW	79	YG	-.23
WWR	113	YW	122	Marb	.12
YW	1439	ADG	.27	BF	-.039
YWR	112	MCE	11	REA	.87
ADG	3.90	Milk	27	API	129
		MWW	67	TI	76
		Stay	13		

WS Beef King W107
 CLRS Archie 136 A
 Hook's Ultimatum 36U
 SS Ebonys Masterpiece
 Kappes Zola P243 Z50
 Kappes Zola P243

A moderate framed, stout constructed Archie son that goes back to the same cow family as Kappes Archie D224, Lot 15.



Kappes Drover D247

Black Homo. Polled Purebred Bull

ASA#(3106279) BD: 3-25-16 Tattoo: D247

A high performing Drover son that is big hipped, bold through the center portion of his body, long sided and stout constructed. He's in the top two percent of the breed on both WW and YW EPD.

Triple C Singletary S3H
 CCR Drover 9094A
 CCR Ms. 4045 Time 7322T
 OLF Thor X54
 Kappes Windi W38 A86
 Kappes Windi T421 W38

CCR Drover 9094A, Sire

BW	103	CE	8	DOC	11.8
BWR	82	BW	4.8	CW	55.4
WW	837	WW	86	YG	-.17
WWR	116	YW	132	Marb	.21
YW	1520	ADG	.29	BF	-.035
YWR	118	MCE	10	REA	.83
ADG	4.28	Milk	24	API	130
		MWW	67	TI	80
		Stay	13		



Kappes Drover D128

Homo. Black Homo. Polled Purebred Bull

ASA#(3106160) BD: 3-16-16 Tattoo: D128

Moderate framed, bold featured.

Triple C Singletary S3H
 CCR Drover 9094A
 CCR Ms. 4045 Time 7322T
 Wheatland High Octane 169Y
 Kappes Porsche N289 A94
 Kappes Porsche N289

BW	92	CE	7	DOC	12.7
BWR	94	BW	2.6	CW	26.1
WW	788	WW	63	YG	-.31
WWR	109	YW	88	Marb	.17
YW	1279	ADG	.16	BF	-.032
YWR	100	MCE	9	REA	.90
ADG	3.08	Milk	25	API	119
		MWW	57	TI	67
		Stay	12		



CCR Drover 9094A, Sire



Kappes Drover D165

Black Dbl. Polled Purebred Bull

ASA#(3106197) BD: 3-19-16 Tattoo: D165

BW	89	CE	10	DOC	12.2
BWR	98	BW	2.5	CW	23.1
WW	774	WW	60	YG	-.27
WWR	107	YW	84	Marb	.21
YW	1272	ADG	.15	BF	-.027
YWR	99	MCE	12	REA	.79
ADG	3.10	Milk	30	API	129
		MWW	60	TI	67
		Stay	15		

Triple C Singletary S3H
CCR Drover 9094A
CCR Ms. 4045 Time 7322T
SS Ebony's Masterpiece
Kappes Lynn U412
GSR Ms. Priority 156L

Long sided, big footed, heavy muscled.



Kappes Drover D399

Black Dbl. Polled Purebred Bull

ASA#(3106430) BD: 4-10-16 Tattoo: D399

BW	90	CE	8	DOC	12.2
BWR	97	BW	3.7	CW	33.4
WW	739	WW	68	YG	-.28
WWR	102	YW	98	Marb	.23
YW	1222	ADG	.19	BF	-.038
YWR	N/A	MCE	10	REA	.86
ADG	3.02	Milk	20	API	129
		MWW	54	TI	71
		Stay	14		

Triple C Singletary S3H
CCR Drover 9094A
CCR Ms. 4045 Time 7322T
Sys Kappes Detonator 626
Kappes Patty P228 W358
Kappes Patty P228



Kappes Drover D302

Black Dbl. Polled Purebred Bull

ASA#(3106333) BD: 3-28-16 Tattoo: D302

BW	90	CE	10	DOC	12.7
BWR	97	BW	2.1	CW	38.4
WW	798	WW	72	YG	-.25
WWR	110	YW	110	Marb	.13
YW	1368	ADG	.24	BF	-.027
YWR	107	MCE	13	REA	.92
ADG	3.57	Milk	26	API	131
		MWW	62	TI	73
		Stay	14		

Triple C Singletary S3H
CCR Drover 9094A
CCR Ms. 4045 Time 7322T
SS Ebony's Masterpiece
Kappes Fallon U288 Y266
Kappes Fallon U288

Added growth, he's in the top twenty percent of the breed
WW and top fifteen percent YW EPD.



Kappes Drover D256

Black Homo. Polled Purebred Bull

ASA#(3106288) BD: 3-25-16 Tattoo: D256

He is in the top twenty percent of the breed in both WW and YW EPD.

Triple C Singletary S3H
CCR Drover 9094A
CCR Ms. 4045 Time 7322T
Mr. NLC Upgrade U8676
Kappes Sadie M166 Z626
Kappes Sadie M166

BW	95	CE	8	DOC	10.3
BWR	91	BW	3.2	CW	34.7
WW	718	WW	68	YG	-.34
WWR	99	YW	101	Marb	.21
YW	1267	ADG	.20	BF	-.046
YWR	99	MCE	10	REA	.99
ADG	3.44	Milk	23	API	121
		MWW	58	TI	71
		Stay	10		



Kappes Sadie T635 Z624, Dam



Kappes Sadie T635, Grandam



Kappes Thunder 863 C523, \$16,500 Maternal Brother



Kappes S Force D4

Homo. Black Homo. Polled Purebred Bull

ASA#(3106045) BD: 2-15-16 Tattoo: D4

Here's a Shear Force son out of our Chamberlin x Sadie donor. He's in the top ten percent on CE, WW, YW, and API EPDs.

Nichols Legacy G151
Hooks Shear Force 38K
C&D Tracy
R&R Chamberlain X744
Kappes Sadie T635 Z624
Kappes Sadie T635

BW	89	CE	14	DOC	12.1
BWR	98	BW	.8	CW	30.0
WW	774	WW	73	YG	-.54
WWR	112	YW	100	Marb	.23
YW	1208	ADG	.17	BF	-.061
YWR	95	MCE	11	REA	1.47
ADG	2.72	Milk	31	API	142
		MWW	68	TI	80
		Stay	13		

This sale will be broadcast live on the internet! **DVAuction** Broadcasting Real-Time Auctions

WE LOOK FORWARD TO SEEING YOU ON FEBRUARY 18TH!

Sons of Wheatland High Octane 169Y

Homo. Black Homo. Polled Purebred Bull ASA#2632510 BD: 2-16-11 Tattoo: 169Y
 Wheatland Predator 922W x Wheatland Lady 351N
 EPDs: 1 3.1 64 97 .20 -1.1 18 50 6 12.0 Carcass: 32.0 -.43 -.15 -.050 1.22 84 59



Kappes H Oct D95

Black Dbl. Polled Purebred Bull
 ASA#(3106127) BD: 3-13-16 Tattoo: D95

BW	92	CE	4	DOC	9.1	Wheatland Predator 922W
BWR	94	BW	4.0	CW	45.8	Wheatland High Octane 169Y
WW	758	WW	75	YG	-32	Wheatland Lady 351N
WWR	105	YW	118	Marb	-.08	Kappes Trailblazer S516
YW	1428	ADG	.26	BF	-.065	Kappes Morgan T121 W14
YWR	111	MCE	6	REA	.95	Kappes Morgan T121
ADG	4.20	Milk	25	API	101	
		MWW	62	TI	67	
		Stay	9			

A high performing High Octane son that is big backed, long sided, bold sprung, and stout constructed.



Kappes H Oct D353

Black Homo. Polled Purebred Bull
 ASA#(3106384) BD: 4-3-16 Tattoo: D353

BW	86	CE	7	DOC	9.8	Wheatland Predator 922W
BWR	101	BW	2.1	CW	48.3	Wheatland High Octane 169Y
WW	818	WW	81	YG	-.31	Wheatland Lady 351N
WWR	113	YW	127	Marb	-.02	GW Lucky Man 644N
YW	1528	ADG	.29	BF	-.06	Kappes Sadie M166 Y609
YWR	119	MCE	6	REA	.98	Kappes Sadie M166
ADG	4.44	Milk	21	API	116	
		MWW	61	TI	74	
		Stay	10			

He's heavy muscled, moderate framed and big footed.



Kappes Northern Octane, Full Brother



Kappes H Oct D150

Homo. Black Homo. Polled Purebred Bull
 ASA#(3106182) BD: 3-18-16 Tattoo: D150

BW	95 ET	CE	3	DOC	8.4	Wheatland Predator 922W
BWR	N/A	BW	3.5	CW	38.1	Wheatland High Octane 169Y
WW	790	WW	68	YG	-.48	Wheatland Lady 351N
WWR	N/A	YW	106	Marb	-.24	Daume Lucky Deal L101
YW	1346	ADG	.23	BF	-.056	Kappes Sadie T635
YWR	N/A	MCE	6	REA	1.4	Kappes Sadie M166
ADG	3.48	Milk	26	API	88	
		MWW	60	TI	60	
		Stay	8			

Here's a full sib to our high seller bull a few year back Kappes Northern Octane. He's heavy muscled, stout made and big hiped.



Kappes Sadie T635, Dam



Kappes H Oct D346

Black Dbl. Polled Purebred Bull
 ASA#(3106377) BD: 4-2-16 Tattoo: D346

BW	83	CE	7	DOC	10.4	Wheatland Predator 922W
BWR	105	BW	1.5	CW	30.9	Wheatland High Octane 169Y
WW	782	WW	70	YG	-.36	Wheatland Lady 351N
WWR	108	YW	100	Marb	.01	Kappes Bottom Line U633
YW	1336	ADG	-.19	BF	-.065	Kappes Gina P95 X381
YWR	104	MCE	5	REA	.88	Kappes Gina P95
ADG	3.47	Milk	18	API	113	
		MWW	53	TI	69	
		Stay	10			

Thick made, heavy muscle, stout High Octane son.



Kappes H Oct D454

Black Homo. Polled Purebred Bull
 ASA#(3106485) BD: 4-26-16 Tattoo: D454

BW	89	CE	7	DOC	9.8	Wheatland Predator 922W
BWR	98	BW	2.0	CW	28.5	Wheatland High Octane 169Y
WW	630	WW	60	YG	-.38	Wheatland Lady 351N
WWR	87	YW	93	Marb	-.02	GW Lucky Man 644N
YW	1244	ADG	.21	BF	-.059	Kappes Sadie M166 X613
YWR	N/A	MCE	7	REA	.95	Kappes Sadie M166
ADG	3.84	Milk	24	API	106	
		MWW	54	TI	62	
		Stay	10			

He's big footed and square hiped.



Kappes H Oct D308

Black Dbl. Polled Purebred Bull
 ASA#(3106339) BD: 3-28-16 Tattoo: D308

BW	95	CE	4	DOC	9.7	Wheatland Predator 922W
BWR	91	BW	3.1	CW	30.6	Wheatland High Octane 169Y
WW	703	WW	65	YG	-.43	Wheatland Lady 351N
WWR	97	YW	94	Marb	-.15	Daume Lucky Deal L101
YW	1278	ADG	-.19	BF	-.061	Kappes Trinia R103 Z195
YWR	100	MCE	7	REA	1.11	Kappes Trinia R103
ADG	3.60	Milk	18	API	94	
		MWW	51	TI	59	
		Stay	9			



Kappes H Oct D303

Black Dbl. Polled Purebred Bull
 ASA#(3106334) BD: 3-28-16 Tattoo: D303

BW	93	CE	5	DOC	9.6	Wheatland Predator 922W
BWR	93	BW	2.1	CW	23.4	Wheatland High Octane 169Y
WW	767	WW	61	YG	-.45	Wheatland Lady 351N
WWR	106	YW	85	Marb	-.16	Kappes Yukon S522
YW	1213	ADG	.15	BF	-.047	Kappes Zola U39 Y382
YWR	94	MCE	7	REA	1.19	Kappes Zola U39
ADG	2.79	Milk	24	API	98	
		MWW	54	TI	59	
		Stay	11			



Kappes H Oct D261

Black Dbl. Polled Purebred Bull

ASA#(3106286) BD: 3-25-16 Tattoo: D261

BW	82	CE	7	DOC	10.8
BWR	106	BW	1.0	CW	31.6
WW	808	WW	72	YG	-.33
WWR	112	YW	102	Marb	-.10
YW	1343	ADG	-.19	BF	-.052
YWR	105	MCE	4	REA	.9
ADG	3.34	Milk	20	API	110
		MWW	56	TI	67
		Stay	11		

Wheatland Predator 922W
Wheatland High Octane 169Y
Wheatland Lady 351N
Kappes U Are The Best N8
Kappes Lacey T424
Kappes Lacey P185

Here's a High Octane son that's in the top twenty percent on both WW and YW EPD.



Kappes H Oct D157

Black Dbl. Polled Purebred Bull

ASA#(3106189) BD: 3-19-16 Tattoo: D157

BW	91	CE	7	DOC	9.8
BWR	95	BW	2.1	CW	44.2
WW	807	WW	74	YG	-.34
WWR	112	YW	119	Marb	-.04
YW	1466	ADG	-.28	BF	-.061
YWR	114	MCE	8	REA	1.01
ADG	4.13	Milk	28	API	110
		MWW	65	TI	71
		Stay	9		

Wheatland Predator 922W
Wheatland High Octane 169Y
Wheatland Lady 351N
OLF Thor X54
Kappes Hailey S335 A410
Kappes Hailey S335

Stout made and heavy muscled.



Kappes N Oct D375

Black Dbl. Polled Purebred Bull

ASA#(3106406) BD: 4-6-16 Tattoo: D375

BW	80	CE	9	DOC	6.9
BWR	108	BW	-.2	CW	19.6
WW	816	WW	65	YG	-.51
WWR	113	YW	85	Marb	-.19
YW	1218	ADG	.13	BF	-.049
YWR	95	MCE	11	REA	1.34
ADG	2.51	Milk	23	API	104
		MWW	55	TI	64
		Stay	10		

Wheatland High Octane 169Y
Kappes Northern Octane
Kappes Sadie T635
Kappes Yukon S522
Kappes Jenna N379 W369
Kappes Jenna N379

Here's a long sided Northern Octane son that is in the top fifteen percent on WW and top twenty-five on YW EPD.



Kappes N Oct D324

Homo. Black Homo. Polled Purebred Bull

ASA#(3106355) BD: 3-30-16 Tattoo: D324

BW	87	CE	8	DOC	9.5
BWR	100	BW	2.2	CW	23.7
WW	731	WW	63	YG	-.41
WWR	101	YW	86	Marb	-.04
YW	1223	ADG	.14	BF	-.035
YWR	95	MCE	11	REA	1.17
ADG	3.07	Milk	25	API	104
		MWW	57	TI	63
		Stay	9		

Wheatland High Octane 169Y
Kappes Northern Octane
Kappes Sadie T635
SS Ebony's Masterpiece
Kappes Paris T138
Kappes Paris N23

A moderate framed, big footed, heavy muscled, stout pinned bull.



Kappes Trail X83 D395

Black Dbl. Polled Purebred Bull

ASA#(3106426) BD: 4-9-16 Tattoo: D395

BW	75	CE	16	DOC	7.8
BWR	114	BW	-2.8	CW	14.8
WW	716	WW	53	YG	-.43
WWR	103	YW	82	Marb	-.04
YW	1262	ADG	.18	BF	-.075
YWR	N/A	MCE	15	REA	.81
ADG	3.41	Milk	26	API	129
		MWW	53	TI	66
		Stay	12		

Kappes Trailblazer S516
Kappes Trailblazer X83
Kappes Porsche U611
Daume Lucky Deal L101
Kappes Farren U279
Kappes Farren R116



Kappes Val 761 D172

Homo. Black Homo. Polled Purebred Bull

ASA#(3106204) BD: 3-20-16 Tattoo: D172

BW	89	CE	13	DOC	4.7
BWR	98	BW	.8	CW	27.3
WW	782	WW	67	YG	-.32
WWR	108	YW	95	Marb	.04
YW	1287	ADG	.18	BF	-.061
YWR	100	MCE	13	REA	.73
ADG	3.15	Milk	23	API	128
		MWW	57	TI	70
		Stay	13		

KnH Added Value 58W
Kappes Ad Value 761 Z609
Kappes Sadie M166
Kappes Trailblazer S516
Kappes Porsche N289 W207
Kappes Porsche N289



Kappes Alpine D363

Black Dbl. Polled Purebred Bull

ASA#(3106394) BD: 4-3-16 Tattoo: D363

BW	97	CE	8	DOC	12.4
BWR	88	BW	2.6	CW	31.6
WW	850	WW	69	YG	-.33
WWR	118	YW	98	Marb	.10
YW	1304	ADG	.18	BF	-.053
YWR	102	MCE	13	REA	.86
ADG	2.85	Milk	30	API	126
		MWW	64	TI	70
		Stay	15		

LRS Pendleton 669Z
Traxs Alpine B62
Traxs Miss Blk Dia Y167
Kappes 70:70 Beef T260
Kappes Mallory S250 A130
Kappes Mallory S250



Kappes Alpine D270

Black Dbl. Polled Purebred Bull

ASA#(3106301) BD: 3-26-16 Tattoo: D270

BW	78	CE	9	DOC	8.9
BWR	110	BW	1.2	CW	18.4
WW	740	WW	57	YG	-.35
WWR	102	YW	79	Marb	.01
YW	1266	ADG	.14	BF	-.048
YWR	99	MCE	12	REA	.83
ADG	3.28	Milk	30	API	119
		MWW	59	TI	63
		Stay	14		

LRS Pendleton 669Z
Traxs Alpine B62
Traxs Miss Blk Dia Y167
SRS J914 Preferred Beef
Kappes Phyllis N167
Kappes Black Irish G200



Kappes Alpine D223

Black Dbl. Polled Purebred Bull

ASA#(3106255) BD: 3-23-16 Tattoo: D223

BW	95	CE	8	DOC	8.8
BWR	91	BW	3.7	CW	38.9
WW	785	WW	75	YG	-.32
WWR	109	YW	108	Marb	.10
YW	1330	ADG	-.20	BF	-.053
YWR	104	MCE	13	REA	.94
ADG	3.42	Milk	27	API	123
		MWW	65	TI	72
		Stay	14		

LRS Pendleton 669Z
Traxs Alpine B62
Traxs Miss Blk Dia Y167
OLF Thor X54
Kappes Lana S226 A226
Kappes Lana S226

An Alpine son that is in the top ten percent of the breed in WW, YW, and MCE EPD.



Kappes Alpine D152

Black Dbl. Polled Purebred Bull

ASA#(3106184) BD: 3-18-16 Tattoo: D152

BW	79	CE	10	DOC	11.5
BWR	109	BW	.5	CW	22.6
WW	738	WW	58	YG	-.35
WWR	102	YW	87	Marb	.13
YW	1262	ADG	-.18	BF	-.056
YWR	98	MCE	12	REA	.81
ADG	3.28	Milk	30	API	132
		MWW	59	TI	68
		Stay	15		

LRS Pendleton 669Z
Traxs Alpine B62
Traxs Miss Blk Dia Y167
Kappes 70:70 Beef T260
Kappes Kay P84 Y525
Kappes Kay P84

Sons of OLF Thor X54

Homo. Black Homo. Polled Purebred Bull ASA#2559920 BD: 3-4-10 Tattoo: X54
 OLF Odin U5 x OLF Lady Trooper P977
 EPDs: 17 -.6 74 110 .23 17 33 70 10 3.5 Carcass: 34.2 -.40 -.01 -.081 .90 131 76



Kappes Thor D70

Black Homo. Polled 3/4 SM 1/4 AN Bull

ASA#(3106103) BD: 3-9-16
 Tattoo: D70

OLF Odin U5
 OLF Thor X54
 OLF Lady Trooper P977
 S A V International 2020
 Kappes Sadie T635 B9
 Kappes Sadie T635

BW	95	CE	8	DOC	5.4
BWR	91	BW	2.9	CW	57.2
WW	853	WW	90	YG	-.23
WWR	123	YW	140	Marb	.07
YW	1469	ADG	.31	BF	-.035
YWR	115	MCE	13	REA	1.01
ADG	3.90	Milk	33	API	109
		MWW	78	TI	77
		Stay	8		

Power and Performance, these two have it. They are full sibs by pedigree. Stout, powerful, heavy muscled, high performing, thick end and not to mention they are both in the top one percent of the breed on WW, YW, MWW, and CW. If you're looking to add pounds to your cattle and still maintain high percentage Simmentals, then take a look at these two bulls.



Kappes Sadie T635, Grandam



Kappes Thor D60

Black Homo. Polled 3/4 SM 1/4 AN Bull

ASA#(3106093) BD: 3-6-16
 Tattoo: D60

OLF Odin U5
 OLF Thor X54
 OLF Lady Trooper P977
 S A V International 2020
 Kappes Sadie T635 B18
 Kappes Sadie T635

BW	102	CE	8	DOC	5.4
BWR	83	BW	3.4	CW	60.3
WW	855	WW	91	YG	-.21
WWR	118	YW	144	Marb	.07
YW	1504	ADG	.33	BF	-.035
YWR	117	MCE	9	REA	1.01
ADG	4.10	Milk	32	API	109
		MWW	78	TI	77
		Stay	8		



Kappes Thor D13

Black Baldy Homo. Polled 3/4 SM 1/4 AN Bull

ASA#(3106054) BD: 2-23-16 Tattoo: D13

OLF Odin U5
 OLF Thor X54
 OLF Lady Trooper P977
 SVF Steel Force S701
 Kappes Georgina 088 B7
 J K Miss Georgina 088

BW	79	CE	14	DOC	6.1
BWR	109	BW	-.8	CW	23.4
WW	672	WW	59	YG	-.26
WWR	93	YW	91	Marb	.23
YW	1246	ADG	.20	BF	-.037
YWR	97	MCE	13	REA	.68
ADG	3.64	Milk	25	API	120
		MWW	55	TI	67
		Stay	8		

Boy this bull sure give you a cool look. He's long and extended from the side, sweet fronted, bold sprung, big footed, and soft pasterened.



Sons of Kappes Megatron A12

Hetero. Black Homo. Polled Purebred Bull ASA#2713755 BD: 3-2-13 Tattoo: A12
 WAGR Dream Catcher 03R x SWC Ruby Ynona 139Y
 EPDs: 13 -1.1 69 105 .23 9 21 55 12 10.1 Carcass: 30.5 -.45 .30 -.055 1.23 145 81



LOT 48

Kappes Mega D292

Black Dbl. Polled 1/2 SM 1/2 AN Bull
 ASA#(3106323) BD: 3-27-16 Tattoo: D292

WAGR Dream Catcher 03R
 Kappes Megatron A12
 SWC Ruby Ynona 139Y
 Connealy Thunder
 LBK Eline Lady 8K26
 LBK Eline Lady 4K09

BW	94	CE	10	DOC	10.1
BWR	92	BW	1.4	CW	47.8
WW	812	WW	78	YG	-.13
WWR	117	YW	127	Marb	.35
YW	1428	ADG	.31	BF	-.015
YWR	112	MCE	9	REA	.77
ADG	3.90	Milk	22	API	127
		MWW	61	TI	78
		Stay	8		

We acquired D292's mother off of Leland Kruse's dispersal a few years back and she has certainly got it done for us year in and year out. This Megatron son out of her is proof of that. He's bold through the center portion of his body, long and extended through his front one third, big back, stout pinned, square hip and sound structured.

LOT 49

Kappes Mega D300

Black Homo. Polled 3/4 SM 1/4 AN Bull
 ASA#(3106331) BD: 3-28-16 Tattoo: D300

WAGR Dream Catcher 03R
 Kappes Megatron A12
 SWC Ruby Ynona 139Y
 W/C United 956Y
 Kappes Mia W46 A190
 Kappes Mia T127 W46

BW	81	CE	12	DOC	10.4
BWR	107	BW	-.1	CW	29.2
WW	720	WW	68	YG	-.29
WWR	104	YW	100	Marb	.52
YW	1201	ADG	.20	BF	-.023
YWR	94	MCE	9	REA	.97
ADG	3.05	Milk	20	API	140
		MWW	54	TI	78
		Stay	10		

Moderate framed, stout, square built Megatron son that is in the top ten percent of the breed on both WW and YW EPD.

LOT 50

Kappes Mega D379

Black Brockle Homo. Polled 3/4 SM 1/4 AN Bull
 ASA#(3106410) BD: 4-6-16 Tattoo: D379

WAGR Dream Catcher 03R
 Kappes Megatron A12
 SWC Ruby Ynona 139Y
 RDDA 004 2600S of SCC
 Kappes Fallon W329
 Kappes Fallon S464

BW	89	CE	12	DOC	10.5
BWR	98	BW	-.4	CW	16.6
WW	667	WW	52	YG	-.40
WWR	92	YW	79	Marb	.35
YW	1177	ADG	.17	BF	-.047
YWR	92	MCE	11	REA	.96
ADG	3.21	Milk	26	API	131
		MWW	52	TI	66
		Stay	13		

Here's a brockle faced bull out of a show heifer of mine. He is attractive from the side, level built, and sound structured.



LOT 51

Kappes Mega D291

Black Blaze Homo. Polled 3/4 SM 1/4 AN Bull
 ASA#(3106322) BD: 3-27-16 Tattoo: D291

WAGR Dream Catcher 03R
 Kappes Megatron A12
 SWC Ruby Ynona 139Y
 S A V Bismarck 5682
 WINC Melanie 110Y
 R&R Monica T713



Kappes Grand Slam C141
 \$7,500 Maternal Sibling

Wow! Look at that picture! Every time we go to in the bull pen, he sets up perfectly and gives you a killer look. He's elegant about his head and neck, bold sprung in his upper and lower rib, square hiped, stout made, and sound as a cat. And not to mention with all that added phenotype, he's still in the top fifteen percent of the breed on WW, YW, and ADG EPD. His mother is one of our highest performing half-blood cows, which has a tremendous spread between birth and growth and a beautiful utter on her. He's a half sib to one of our lead of CE bull last year Kappes Grand Slam going to Doug Miller, SD. Bid early and often.

BW	95	CE	13	DOC	10.6
BWR	91	BW	.4	CW	34.5
WW	733	WW	71	YG	-.40
WWR	106	YW	108	Marb	.33
YW	1278	ADG	.23	BF	-.049
YWR	100	MCE	12	REA	1.16
ADG	3.43	Milk	25	API	135
		MWW	61	TI	76
		Stay	11		

LOT 52

Kappes Mega D233

Black Blaze Homo. Polled 5/8 SM 3/8 AN Bull
 ASA#(3106265) BD: 3-23-16 Tattoo: D233

BW	84	CE	12	DOC	11.4
BWR	103	BW	.0	CW	31.1
WW	702	WW	65	YG	-.33
WWR	101	YW	103	Marb	.43
YW	1302	ADG	.23	BF	-.05
YWR	102	MCE	8	REA	.92
ADG	3.82	Milk	24	API	134
		MWW	56	TI	75
		Stay	10		

WAGR Dream Catcher 03R
 Kappes Megatron A12
 SWC Ruby Ynona 139Y
 TNT Punch Y260
 Kappes Ms. MRG 1165T B140
 RDDA Ms. MRG Dir 1165T of SCC

Moderate framed, stout constructed, big hiped.

LOT 53

Kappes Mega D252

Black Homo. Polled 3/4 SM 1/4 AN Bull
 ASA#(3106284) BD: 3-25-16 Tattoo: D252

BW	94	CE	9	DOC	10.1
BWR	92	BW	2.1	CW	36.6
WW	685	WW	66	YG	-.20
WWR	95	YW	106	Marb	.33
YW	1264	ADG	.25	BF	-.026
YWR	98	MCE	9	REA	.74
ADG	3.64	Milk	25	API	124
		MWW	58	TI	69
		Stay	11		

WAGR Dream Catcher 03R
 Kappes Megatron A12
 SWC Ruby Ynona 139Y
 Berbos Traveler 044 030 3267
 Kappes Nano U258
 Kappes Nano N108

Good balanced, long sided, bull out of one of our half blood Simmental donors.

LOT 54

Kappes Mega D264

Black Homo. Polled 3/4 SM 1/4 AN Bull
 ASA#(3106295) BD: 3-25-16 Tattoo: D264

WAGR Dream Catcher 03R
 Kappes Megatron A12
 SWC Ruby Ynona 139Y
 Mr. NLC Upgrade U8676
 Ms. TR Katinka X0760
 TR Ms. Katinka 3208N

BW	92	CE	10	DOC	11.3
BWR	94	BW	1.0	CW	32.6
WW	709	WW	66	YG	-.40
WWR	102	YW	103	Marb	.48
YW	1283	ADG	.23	BF	-.068
YWR	100	MCE	8	REA	1.01
ADG	3.61	Milk	24	API	126
		MWW	56	TI	75
		Stay	6		

Here's a solid black Megatron son out of a maternal sib to the 2013 Grand Champion Percentage Simmental female at the NAILE.



Kappes Mega D211

Black Blaze Homo. Polled 1/2 SM 1/2 AN Bull
 ASA#(3106243) BD: 3-22-16 Tattoo: D211

BW	71	CE	15	DOC	10.0
BWR	118	BW	-2.8	CW	19.8
WW	642	WW	54	YG	-.25
WWR	89	YW	90	Marb	.41
YW	1237	ADG	.22	BF	-.023
YWR	96	MCE	10	REA	.73
ADG	3.77	Milk	17	API	146
		MWW	44	TI	71
		Stay	9		

WAGR Dream Catcher 03R
 Kappes Megatron A12
 SWC Ruby Ynona 139Y
 Berbos Traveler 044 030 3267
 Kappes Prim Lassie R108 X139
 Kappes Prim Lassie R108

If you're looking for a heifer bull prospect, this moderate framed, smooth jointed Megatron son should work.



Kappes Mega D39

Black Dbl. Polled 5/8 SM 3/8 AN Bull
 ASA#(3106075) BD: 3-1-16 Tattoo: D39

BW	85	CE	12	DOC	11.9
BWR	102	BW	-.4	CW	32.8
WW	769	WW	68	YG	-.28
WWR	106	YW	107	Marb	.56
YW	1364	ADG	.24	BF	-.033
YWR	106	MCE	10	REA	.91
ADG	3.78	Milk	22	API	147
		MWW	56	TI	80
		Stay	11		

WAGR Dream Catcher 03R
 Kappes Megatron A12
 SWC Ruby Ynona 139Y
 GW Premium Beef 021TS
 Kappes Xylia Z28 B28
 Kappes Xylia Z28



Kappes Sadie M166, Grandam



Kappes GRD BRK D275

Homo. Black Homo. Polled 3/4 SM 1/4 AN Bull
 ASA#(3106306) BD: 3-26-16 Tattoo: D275

MCM Top Grade 018X
 LRS Grade Break 114B
 LRS Ms. Break Free 147Y
 G A R Predestined
 Kappes Sadie M166 W612
 Kappes Sadie M166

Here's a stout, heavy muscled, long sided, big hipped Grade Break son out of the Sadie cow family. He's in the top one percent of the breed on WW, YW, and CW EPD.

BW	105	CE	5	DOC	7.5
BWR	79	BW	4.7	CW	56.9
WW	794	WW	86	YG	-.23
WWR	114	YW	135	Marb	.60
YW	1410	ADG	.31	BF	-.058
YWR	110	MCE	10	REA	.83
ADG	3.87	Milk	20	API	123
		MWW	63	TI	84
		Stay	11		



Kappes GRD BRK D198

Homo. Black Dbl. Polled 3/4 SM 1/4 AN Bull
 ASA#(3106230) BD: 3-21-16 Tattoo: D198

MCM Top Grade 018X
 LRS Grade Break 114B
 LRS Ms. Break Free 147Y
 G A R Predestined
 Kappes Sadie U49 X46
 Kappes Sadie U49

A high performing, long ended, expressive muscled, stout constructed bull.

BW	84	CE	10	DOC	10.8
BWR	103	BW	1.3	CW	47.9
WW	745	WW	78	YG	-.24
WWR	107	YW	128	Marb	.72
YW	1426	ADG	.31	BF	-.052
YWR	112	MCE	9	REA	.81
ADG	4.28	Milk	25	API	146
		MWW	64	TI	88
		Stay	11		

Sons of Barstow Cash

Black Homo. Polled Purebred Angus Bull ASA#2769372 BD: 1-28-11 Tattoo: Y18
 Sitz Dash 10277 x Barstow Queen W16
 EPDs: 20 -2.5 77 143 .41 14 14 53 6 15.9 Carcass: 52.3 -.16 .64 .057 1.51 140 81



LOT 59

Kappes B Cash D347

Black Homo. Polled 1/2 SM 1/2 AN Bull
 ASA#(3106378) BD: 4-2-16 Tattoo: D347

Sitz Dash 10277
 Barstow Cash
 Barstow Queen W16
 Mr. NLC Upgrade U8676
 Kappes Porsche U622 Z385
 Kappes Porsche U622

BW	87	CE	13	DOC	14.4
BWR	100	BW	.6	CW	56.3
WW	785	WW	83	YG	-.22
WWR	109	YW	143	Marb	.51
YW	1461	ADG	.38	BF	-.014
YWR	114	MCE	13	REA	1.16
ADG	4.29	Milk	24	API	152
		MWW	65	TI	88
		Stay	6		

What a set of numbers, big spread between birth and growth and yet he's still in the top fifteen percent of the breed on API. He's stout constructed, heavy muscled, big hipped, and thick ended. Added pounds and performance. These Barstow Cash half-blood sons continue to grow and he's proof of that.

LOT 60

Kappes B Cash D147

Black Dbl. Polled 1/2 SM 1/2 AN Bull
 ASA#(3106179) BD: 3-18-16 Tattoo: D147

Sitz Dash 10277
 Barstow Cash
 Barstow Queen W16
 GW Lucky Man 644N
 Kappes Zola T130 W25
 Kappes Zola T130

BW	82	CE	16	DOC	15.0
BWR	106	BW	-.5	CW	52.0
WW	796	WW	80	YG	-.18
WWR	110	YW	139	Marb	.43
YW	1455	ADG	.37	BF	.007
YWR	113	MCE	15	REA	1.13
ADG	4.17	Milk	20	API	160
		MWW	60	TI	85
		Stay	10		

A stout made, thick ended Cash son.

LOT 61

Kappes B Cash D267

Black Homo. Polled 1/4 SM 3/4 AN Bull
 ASA#(3106298) BD: 3-25-16 Tattoo: D267

Sitz Dash 10277
 Barstow Cash
 Barstow Queen W16
 KS Black Diamond W992
 Kappes Paisley 224 Z615
 P A R ' S Kava Miss 224

BW	87	CE	12	DOC	14.2
BWR	100	BW	.7	CW	45.6
WW	678	WW	72	YG	-.18
WWR	98	YW	124	Marb	.36
YW	1313	ADG	.33	BF	.019
YWR	103	MCE	9	REA	1.16
ADG	4.00	Milk	16	API	123
		MWW	52	TI	73
		Stay	7		



Kappes Main Event B1,
\$12,000 Full Brother

Kappes Thunder
863-C523, \$16,500
Maternal Sibling



LOT
62

Kappes B Cash D149

Black Homo. Polled 1/2 SM 1/2 AN Bull
ASA#(3106181) BD: 3-18-16 Tattoo: D149

Sitz Dash 10277
Barstow Cash
Barstow Queen W16
R&R Chamberlain X744
Kappes Sadie T635 Z624
Kappes Sadie T635

BW	93 ET	CE	12	DOC	12.5
BWR	N/A	BW	1.4	CW	54.8
WW	701	WW	82	YG	-.30
WWR	N/A	YW	139	Marb	.32
YW	1287	ADG	.35	BF	-.012
YWR	N/A	MCE	11	REA	1.14
ADG	3.72	Milk	24	API	125
		MWW	65	TI	78
		Stay	7		

This bull is a long sided, high performing, well balanced Cash son out of our Chamberlin donor, a full sib sold for \$12,000 a few years back. He is in the top two percent of the breed on WW, and top one on YW, ADG, CW, and REA EPDs.



Sons of Remington Lock N Load 54U

Hetero. Black Homo. Polled Purebred Bull ASA#2503661 BD: 5-8-08 Tattoo: 54U
Remington On Target 2S x Bar15 Miss Knight 78E-51G
EPDs: 11 1.1 53 105 .32 8 12 39 7 11.4 Carcass: 35.6 -.55 -.05 -.086 1.35 108 61

LOT
63

Kappes LNL D68

Black Homo. Polled 1/2 SM 1/2 AN Bull
ASA#(3106101) BD: 3-8-16 Tattoo: D68

BW	88 ET	CE	10	DOC	10.8
BWR	N/A	BW	1.6	CW	37.8
WW	643	WW	63	YG	-.21
WWR	N/A	YW	109	Marb	.16
YW	1246	ADG	.29	BF	-.028
YWR	N/A	MCE	5	REA	.79
ADG	3.83	Milk	9	API	105
		MWW	41	TI	63
		Stay	3		

Remington On Target 2S
Remington Lock N Load 54U
Bar15 Miss Knight 78E-51G
O C C Kava 784K
P A R ' S Kava Miss 224
PAR'S Traveling Duty

A moderate framed, heavy muscled,
stout made Lock N Load son.

LOT
64

Kappes LNL D86

Black Baldy Homo. Polled 1/2 SM 1/2 AN Bull
ASA#(3106118) BD: 3-12-16 Tattoo: D86

BW	81 ET	CE	10	DOC	10.8
BWR	N/A	BW	1.6	CW	37.8
WW	671	WW	63	YG	-.21
WWR	N/A	YW	109	Marb	.16
YW	1128	ADG	.29	BF	-.028
YWR	N/A	MCE	5	REA	.79
ADG	2.92	Milk	9	API	105
		MWW	41	TI	63
		Stay	3		

Remington On Target 2S
Remington Lock N Load 54U
Bar15 Miss Knight 78E-51G
O C C Kava 784K
P A R ' S Kava Miss 224
PAR'S Traveling Duty

Smooth made, long sided, baldy.

Sons of CCR Drover 9094A

Homo. Black Homo. Polled Purebred Bull ASA#2725679 BD: 2-13-13 Tattoo: 9094A
Triple C Singletary S3H x CCR Ms. 4045 Time 7322T
EPDs: 8 3.2 63 94 .19 11 24 55 13 15.0 Carcass: 30.3 -.21 .31 -.004 .87 131 70



LOT
65

Kappes Drover D341

Black Dbl. Polled 3/4 SM 1/4 AN Bull
ASA#(3106372) BD: 4-1-16 Tattoo: D341

BW	84	CE	9	DOC	14.2
BWR	103	BW	2.4	CW	36.5
WW	700	WW	68	YG	-.14
WWR	97	YW	106	Marb	.41
YW	1299	ADG	.24	BF	-.012
YWR	101	MCE	10	REA	.69
ADG	3.77	Milk	26	API	133
		MWW	60	TI	72
		Stay	14		

Triple C Singletary S3H
CCR Drover 9094A
CCR Ms. 4045 Time 7322T
GW Predestined 701T
Kappes Xenos R273 X369
Kappes Xenos R273

A soft sided, big hipped, well
balanced Drover son.

LOT
66

Kappes Drover D220

Black Homo. Polled 1/2 SM 1/2 AN Bull
ASA#(3106252) BD: 3-23-16 Tattoo: D220

BW	78	CE	15	DOC	13.8
BWR	110	BW	-1.1	CW	25.7
WW	659	WW	58	YG	-.19
WWR	91	YW	96	Marb	.54
YW	1285	ADG	.24	BF	-.008
YWR	100	MCE	11	REA	.73
ADG	3.97	Milk	26	API	150
		MWW	55	TI	75
		Stay	11		

Triple C Singletary S3H
CCR Drover 9094A
CCR Ms. 4045 Time 7322T
S A V Bismarck 5682
Kappes Finks U14 X15
Kappes Finks 931 U14

Moderate framed, smooth jointed,
phenotypically balanced.

LOT
67

Kappes Drover D299

Black Dbl. Polled 3/4 SM 1/4 AN Bull
ASA#(3106330) BD: 3-28-16 Tattoo: D299

BW	103	CE	7	DOC	12.8
BWR	82	BW	4.6	CW	37.8
WW	760	WW	72	YG	-.12
WWR	105	YW	103	Marb	.33
YW	1266	ADG	.20	BF	-.009
YWR	99	MCE	9	REA	.64
ADG	3.19	Milk	18	API	118
		MWW	54	TI	68
		Stay	12		

Triple C Singletary S3H
CCR Drover 9094A
CCR Ms. 4045 Time 7322T
LT Mullen 6803 Of EA
Kappes Una N176 W485
Kappes Una N176

Long made, complete build.

LOT
68

Kappes Drover D81

Black Homo. Polled 1/2 SM 1/2 AN Bull
ASA#(3106113) BD: 3-11-16 Tattoo: D81

BW	87	CE	11	DOC	12.1
BWR	100	BW	1.3	CW	19.9
WW	742	WW	55	YG	-.23
WWR	103	YW	80	Marb	.53
YW	1182	ADG	.16	BF	-.013
YWR	92	MCE	9	REA	.72
ADG	2.81	Milk	27	API	131
		MWW	54	TI	69
		Stay	9		

Triple C Singletary S3H
CCR Drover 9094A
CCR Ms. 4045 Time 7322T
RDDA 004 2600S Of SCC
Kappes Beauty 1165T A239
RDDA Ms. MRG Dir 1165T Of SCC



Kappes Drover D294

Black Dbl. Polled 1/2 SM 1/2 AN Bull
ASA#(3106325) BD: 3-28-16 Tattoo: D294

Moderate, stout made, heavy muscled.

Triple C Singletary S3H
CCR Drover 9094A
CCR Ms. 4045 Time 7322T
Stevenson Moneymaker R185
Kappes Karla 6K37 A603
LBK Ms. Queedy 6K37

BW	94	CE	6	DOC	11.8
BWR	92	BW	2.8	CW	40.6
WW	540	WW	59	YG	.04
WWR	78	YW	110	Marb	.47
YW	1394	ADG	.32	BF	.029
YWR	109	MCE	8	REA	.47
ADG	5.40	Milk	23	API	112
		MWW	52	TI	67
		Stay	10		



Sons of GW Premium Beef 021TS

Homo. Black Homo. Polled 1/2 SM 1/2 AN Bull ASA#2370545 BD: 2-8-06 Tattoo: 021TS
G A R US Premium Beef x GW Miss Lucky Charm 410P
EPDs: 20 -3.3 53 95 .26 10 20 47 11 16.0 Carcass: 22.7 -.23 .54 -.029 .66 167 75



Kappes P. Beef D19

Black Homo. Polled 1/2 SM 1/2 AN Bull
ASA#(3106059) BD: 2-26-16 Tattoo: D19

BW	102	CE	12	DOC	10.9
BWR	83	BW	1.9	CW	47.4
WW	776	WW	76	YG	-.10
WWR	112	YW	125	Marb	.44
YW	1440	ADG	.31	BF	-.015
YWR	113	MCE	10	REA	.67
ADG	4.20	Milk	22	API	137
		MWW	59	TI	78
		Stay	10		

G A R US Premium Beef
GW Premium Beef 021TS
GW Miss Lucky Charm 410P
Swain Dream Weaver 728T
Kappes DKT T779 B261
JD 568 Dakota T779

A long sided, bold sprung, level built GW Premium Beef son that is in the top ten percent of the breed on both YW and ADG EPD.



Kappes P. Beef D32

Black Dbl. Polled 1/2 SM 1/2 AN Bull
ASA#(3106070) BD: 2-28-16 Tattoo: D32

BW	76	CE	17	DOC	13.2
BWR	113	BW	-2.2	CW	22.8
WW	632	WW	54	YG	-.24
WWR	87	YW	93	Marb	.48
YW	1208	ADG	-.24	BF	-.036
YWR	94	MCE	8	REA	.61
ADG	3.65	Milk	19	API	151
		MWW	46	TI	73
		Stay	10		

G A R US Premium Beef
GW Premium Beef 021TS
GW Miss Lucky Charm 410P
W/C Store N Go 562Z
Kappes Patty T302 B333
Kappes Patty T302

Top ten percent of the breed on CE and top fifteen on BW EPD, heifer bull prospect.



Sons of GW Robust 605Z

Homo. Black Homo. Polled 5/8 SM 3/8 AN Bull ASA#2694778 BD: 2-7-12 Tattoo: 605Z
GW Premium Beef 021TS x GW Miss GPRD 123X
EPDs: 13 1.4 86 132 .29 7 22 65 11 18.3 Carcass: 49.9 -.35 .55 -.0335 1.31 145 89



Kappes Robust D133

Black Polled 5/8 SM 3/8 AN Bull
ASA#(3106165) BD: 3-17-16 Tattoo: D133

BW	86	CE	10	DOC	15.4
BWR	101	BW	1.3	CW	27.5
WW	681	WW	61	YG	-.36
WWR	94	YW	93	Marb	.59
YW	1169	ADG	.20	BF	-.043
YWR	91	MCE	9	REA	1.00
ADG	3.07	Milk	26	API	133
		MWW	57	TI	75
		Stay	13		

GW Premium Beef 021TS
GW Robust 605Z
GW Miss GPRD 123X
B/R New Frontier 095
GLS Josie U52
SSE Josie

A moderate framed, big hipped, stout featured GW Robust son.



Kappes Robust D27

Black Homo. Polled 5/8 SM 3/8 AN Bull
ASA#(3106065) BD: 2-27-16 Tattoo: D27

BW	86	CE	8	DOC	15.2
BWR	101	BW	3.0	CW	50.1
WW	751	WW	84	YG	-.31
WWR	104	YW	128	Marb	.33
YW	1321	ADG	.28	BF	-.042
YWR	103	MCE	-1	REA	1.15
ADG	3.60	Milk	22	API	106
		MWW	64	TI	79
		Stay	8		

GW Premium Beef 021TS
GW Robust 605Z
GW Miss GPRD 123X
Wheatland High Octane 169Y
Kappes Phantasy X344 B130
Kappes Phantasy X344

He's in the top one percent of the breed on WW and top two on YW, CW, and REA EPD.



Kappes Robust D219

Black Dbl. Polled 5/8 SM 3/8 AN Bull
ASA#(3106251) BD: 3-23-16 Tattoo: D219

GW Premium Beef 021TS
GW Robust 605Z
GW Miss GPRD 123X
Hook's In Line 81U
Kappes Lacey P190 Z238
Kappes Lacey P190

BW	84	CE	12	DOC	14.0
BWR	103	BW	.8	CW	44.0
WW	741	WW	77	YG	-.24
WWR	103	YW	123	Marb	.45
YW	1361	ADG	.28	BF	-.042
YWR	106	MCE	9	REA	.83
ADG	3.91	Milk	25	API	138
		MWW	63	TI	82
		Stay	12		

Sons of W/C Total Value 19A

Homo. Black Homo. Polled 1/2 SM 1/2 AN Bull ASA#2808457 BD: 2-26-13 Tattoo: 19A
 S A V Net Worth 4200 x 3C Crocus G374 BZ
 EPDs: 2 4.5 86 131 .28 6 16 59 7 9.5 Carcass: 54.1 -.08 .58 .000 .78 100 79



20 • BLACK SIMANGUS™ BULLS • LOTS 75-81



Kappes T Val D91

Homo. Black Homo. Polled 1/2 SM 1/2 AN Bull
 ASA#(3106123) BD: 3-13-16 Tattoo: D91

BW	95	CE	3	DOC	10.8
BWR	91	BW	5.0	CW	57.9
WW	777	WW	81	YG	-0.7
WWR	108	YW	135	Marb	.40
YW	1431	ADG	.34	BF	-.009
YWR	111	MCE	6	REA	.76
ADG	4.13	Milk	21	API	90
		MWW	61	TI	72
		Stay	10		

S A V Net Worth 4200
 W/C Total Value 19A
 3C Crocus G374 BZ
 KS Black Diamond W992
 Kappes E Pride U605 A218
 Kappes SAV E Pride 7021 U605

Long made, heavy muscled, W/C Total Value son.



Kappes T Val D248

Black Dbl. Polled 5/8 SM 3/8 AN Bull
 ASA#(3106280) BD: 3-25-16 Tattoo: D248

BW	93	CE	7	DOC	10.7
BWR	93	BW	3.5	CW	34.9
WW	751	WW	71	YG	-.14
WWR	104	YW	101	Marb	.42
YW	1263	ADG	-.19	BF	-.004
YWR	98	MCE	10	REA	.71
ADG	3.23	Milk	23	API	117
		MWW	58	TI	71
		Stay	10		

S A V Net Worth 4200
 W/C Total Value 19A
 3C Crocus G374 BZ
 SS Ebonys Masterpiece
 Kappes Winter T472 Y259
 Kappes Winter T472

Top fifteen percent on WW and CW EPD.



Kappes T Val D334

Black Dbl. Polled 5/8 SM 11/32 AN 1/32 CS Bull
 ASA#(3106365) BD: 3-31-16 Tattoo: D334

BW	83	CE	9	DOC	8.7
BWR	105	BW	.8	CW	12.6
WW	685	WW	51	YG	-.24
WWR	95	YW	70	Marb	.27
YW	1165	ADG	.12	BF	-.039
YWR	91	MCE	8	REA	.47
ADG	3.02	Milk	23	API	112
		MWW	49	TI	60
		Stay	10		

S A V Net Worth 4200
 W/C Total Value 19A
 3C Crocus G374 BZ
 RFS H121
 Kappes Colleen P133
 Kappes Lady Klein C 322



Kappes T Val D318

Black Dbl. Polled 3/4 SM 1/4 AN Bull
 ASA#(3106349) BD: 3-29-16 Tattoo: D318

BW	82	CE	8	DOC	11.3
BWR	106	BW	1.4	CW	29.5
WW	766	WW	67	YG	-.20
WWR	106	YW	97	Marb	.39
YW	1288	ADG	.19	BF	-.035
YWR	100	MCE	10	REA	.58
ADG	3.30	Milk	26	API	120
		MWW	59	TI	71
		Stay	12		

S A V Net Worth 4200
 W/C Total Value 19A
 3C Crocus G374 BZ
 Kappes 70:70 Beef T260
 Kappes Makayla K305 Y236
 Kappes Break K305



Sons of Wheatland High Octane 169Y

Homo. Black Homo. Polled Purebred Bull ASA#2632510 BD: 2-16-11 Tattoo: 169Y
 Wheatland Predator 922W x Wheatland Lady 351N
 EPDs: 1 3.1 64 97 .20 -1.1 18 50 6 12.0 Carcass: 32.0 -.43 -.15 -.050 1.22 84 59



Kappes H Oct D125

Homo. Black Homo. Polled 3/4 SM 1/4 AN Bull
 ASA#(3106157) BD: 3-16-16 Twin Tattoo: D125

BW	74	CE	4	DOC	11.3
BWR	N/A	BW	4.0	CW	48.7
WW	641	WW	78	YG	-.23
WWR	N/A	YW	122	Marb	.22
YW	1254	ADG	.28	BF	-.059
YWR	N/A	MCE	4	REA	.73
ADG	3.86	Milk	24	API	113
		MWW	63	TI	71
		Stay	11		

Wheatland Predator 922W
 Wheatland High Octane 169Y
 Wheatland Lady 351N
 Hook's In Line 81U
 Kappes Jena T458 Y361
 Kappes Jena T458

Long sided, stout featured, big hiped.



Kappes N Oct D306

Black Dbl. Polled 3/4 SM 1/4 AN Bull
 ASA#(3106337) BD: 3-28-16 Tattoo: D306

BW	94	CE	4	DOC	8.4
BWR	92	BW	3.9	CW	45.1
WW	791	WW	76	YG	-.24
WWR	109	YW	117	Marb	.11
YW	1365	ADG	.26	BF	-.036
YWR	106	MCE	6	REA	.90
ADG	3.60	Milk	26	API	102
		MWW	64	TI	67
		Stay	9		

Wheatland High Octane 169Y
 Kappes Northern Octane
 Kappes Sadie T635
 RDDA N D 208 2508R
 Kappes Paige T101
 Kappes H. Arapahoe L298

Added power and performance here, he's big hiped, big bellied, stout made, soft pasterned and he's in the top ten percent of the breed on both WW and YW EPD.



Kappes Bismark D44

Black Blaze Dbl. Polled 1/2 SM 1/2 AN Bull
 ASA#(3106080) BD: 3-3-16 Tattoo: D44

G A R Grid Maker
 S A V Bismarck 5682
 S A V Abigale 0451
 CCR Cowboy Cut 5048Z
 DMGC Ms. CB Cut 419B
 Wurtz Ms. Two Dot W914

BW	77	CE	16	DOC	12.0
BWR	111	BW	-1.3	CW	25.4
WW	676	WW	63	YG	-.33
WWR	94	YW	96	Marb	.57
YW	1265	ADG	.21	BF	-.034
YWR	99	MCE	12	REA	.95
ADG	3.74	Milk	23	API	150
		MWW	55	TI	76
		Stay	4		

A soft sided, clean made, sound structured, heifer bull prospect.

SAV Resource, Sire



Kappes Resource D251

Homo. Black Homo. Polled 1/2 SM 1/2 AN Bull
 ASA#(3106283) BD: 3-25-16 Tattoo: D251

BW	96	CE	6	DOC	8.3
BWR	90	BW	3.0	CW	51.9
WW	666	WW	74	YG	-.11
WWR	92	YW	129	Marb	.30
YW	1396	ADG	.34	BF	.025
YWR	109	MCE	4	REA	1.06
ADG	4.62	Milk	24	API	101
		MWW	61	TI	72
		Stay	8		

Rito 707 Of Ideal 3407 7075
 S A V Resource 1441
 S A V Blackcap May 4136
 Triple C Invasion R47K
 Kappes Sadie M166 W615
 Kappes Sadie M166

Moderate framed, stout made, heavy muscled.

Sons of S A V International 2020

Black Homo. Polled Purebred Angus Bull ASA#2839442 BD: 2-20-12 Tattoo: 2020
 S A V Harvester 0338 x S A V Embylnette 5483
 EPDs: -1 2.6 85 141 .35 -1 34 76 0 9.7 Carcass: 58.0 .19 .63 .082 .68 88 75



Kappes Inter D82

Black Dbl. Polled 1/2 SM 1/2 AN Bull
 ASA#(3106114) BD: 3-11-16 Tattoo: D82

BW	91	CE	4	DOC	8.3
BWR	95	BW	3.1	CW	35.7
WW	599	WW	63	YG	-.09
WWR	83	YW	102	Marb	.33
YW	1227	ADG	.24	BF	.011
YWR	96	MCE	5	REA	.67
ADG	3.98	Milk	30	API	95
		MWW	62	TI	66
		Stay	7		

S A V Harvester 0338
 S A V International 2020
 S A V Embylnette 5483
 SRS J914 Preferred Beef
 Kappes Windi S83
 Kappes Lady Pride E53



Kappes Inter D100

Black Homo. Polled 1/2 SM 1/2 AN Bull
 ASA#(3106132) BD: 3-14-16 Tattoo: D100

BW	91	CE	2	DOC	9.6
BWR	95	BW	3.4	CW	60.6
WW	794	WW	85	YG	-.10
WWR	110	YW	143	Marb	.24
YW	1474	ADG	.36	BF	.001
YWR	115	MCE	6	REA	.95
ADG	4.30	Milk	27	API	93
		MWW	69	TI	76
		Stay	8		

S A V Harvester 0338
 S A V International 2020
 S A V Embylnette 5483
 Daume Lucky Deal L101
 Kappes Unity T416
 Kappes Unity M217

Added power and performance, long sided, heavy muscled International son that is in the top two percent of the breed on YW and CW and top three percent on WW and ADG EPD.



Kappes B Trav D51

Black Dbl. Polled 1/2 SM 1/2 AN Bull
 ASA#(3106084) BD: 3-4-16 Tattoo: D51

BW	89	CE	10	DOC	10.8
BWR	98	BW	1.9	CW	52.6
WW	772	WW	78	YG	-.09
WWR	107	YW	134	Marb	.38
YW	1396	ADG	.35	BF	-.019
YWR	109	MCE	9	REA	.65
ADG	3.97	Milk	24	API	127
		MWW	63	TI	79
		Stay	11		

Berbo Traveler 044-030
 Berbo Traveler 044 030 3267
 Sitz Barbara Perfection 436
 WBF Titian U109
 Kappes Windi X77 B429
 Kappes Windi U249 X77



Kappes B Trav D263

Black Dbl. Polled 1/2 SM 1/2 AN Bull
 ASA#(3106294) BD: 3-25-16 Tattoo: D263

BW	82	CE	12	DOC	8.1
BWR	106	BW	.1	CW	36.8
WW	786	WW	71	YG	-.15
WWR	109	YW	112	Marb	.37
YW	1283	ADG	.26	BF	-.033
YWR	100	MCE	10	REA	.54
ADG	3.17	Milk	25	API	136
		MWW	60	TI	76
		Stay	11		

Berbo Traveler 044-030
 Berbo Traveler 044 030 3267
 Sitz Barbara Perfection 436
 Kappes Trailblazer S516
 Kappes Nandita R339 Z345
 Kappes Nandita R339



Kappes M Maker D200

Black Polled/Scurred 1/4 SM 3/4 AN Bull
 ASA#(3106232) BD: 3-21-16 Tattoo: D200

Boyd On Target 1083
 Stevenson Money Maker R185
 Stevenson Clova Pride L888
 RDDA 004 2600S Of SCC
 Kappes Nan S485 W272
 Kappes Nan S485

BW	88	CE	5	DOC	11.7
BWR	99	BW	.9	CW	28.7
WW	683	WW	53	YG	-.06
WWR	95	YW	95	Marb	.60
YW	1215	ADG	.26	BF	.038
YWR	95	MCE	10	REA	.34
ADG	3.35	Milk	26	API	113
		MWW	53	TI	66
		Stay	10		

This sale will be
 broadcast live
 on the internet!

DVAuction
 Broadcasting Real-Time Auctions

**WE LOOK FORWARD TO SEEING
 YOU ON FEBRUARY 18TH!**

Mohnen Rictor B254, Sire



Kappes Rict. D297

Black Dbl. Polled 1/2 SM 1/2 AN Bull

ASA#(3106328) BD: 3-28-16 Tattoo: D297

BW	86	CE	7	DOC	11.8
BWR	101	BW	3.1	CW	45.9
WW	750	WW	75	YG	-.11
WWR	104	YW	120	Marb	.27
YW	1257	ADG	.28	BF	-.037
YWR	98	MCE	8	REA	.51
ADG	3.21	Milk	25	API	99
		MWW	62	TI	69
		Stay	7		

WAGR Earthquake 236Z
 Mohnen Rictor B254
 Mohnen Ruth 109
 PVF-J 4P14 Hyb Rookie
 Kappes Jena Y361 A288
 Kappes Jena T458 Y361

Heavy muscled, high performing half-blood that is in the top two percent of the breed on YW, ADG and CW.



Kappes Rict. D110

Black Dbl. Polled 1/2 SM 1/2 AN Bull

ASA#(3106142) BD: 3-15-16 Tattoo: D110

WAGR Earthquake 236Z
 Mohnen Rictor B254
 Mohnen Ruth 109
 Connealy Final Product
 Kappes Makayla X247 Z11
 Kappes Makayla T266 X247

BW	75	CE	10	DOC	12.8
BWR	114	BW	.1	CW	31.3
WW	713	WW	61	YG	-.16
WWR	99	YW	102	Marb	.22
YW	1262	ADG	.25	BF	-.009
YWR	98	MCE	4	REA	.70
ADG	3.47	Milk	29	API	99
		MWW	59	TI	64
		Stay	6		

Long sided, stout featured, heavy muscled, and big hiped Rictor son.

Bieber hard Drive, Sire



Kappes H Drive D228

Red Dbl. Polled 1/2 SM 1/2 AR Bull

ASA#(3106260) BD: 3-23-16 Tattoo: D228

BW	87	CE	13	DOC	10.8
BWR	100	BW	.5	CW	28.9
WW	693	WW	65	YG	-.21
WWR	96	YW	98	Marb	.29
YW	1215	ADG	.20	BF	-.032
YWR	95	MCE	7	REA	.64
ADG	3.33	Milk	18	API	125
		MWW	50	TI	69
		Stay	11		

Lacy Fold Bar 8123
 Bieber Hard Drive Y120
 Bieber Laura 158W
 LFE Black Dakota 385W
 KBHR Miss Naomi Y085
 S063

RED

Long sided, moderate framed, smooth made, red half-blood.



Sons of S A V Bismarck 5682

Homo. Black Homo. Polled Purebred Angus Bull ASA#2492333 BD: 2-1-05 Tattoo: 5682
 G A R Grid Maker x S A V Abigale 0451
 EPDs: 20 -2.7 65 107 .26 13 23 55 8 11.2 Carcass: 30.1 -.34 .75 -.031 1.11 143 77



23 • BLACK ANGUS BULLS • LOTS 91-93



Kappes Bismarck D7

Purebred Angus Bull

ASA#(3106048) BD: 2-21-16 Twin Tattoo: D7

G A R Grid Maker
 S A V Bismarck 5682
 S A V Abigale 0451
 S A V Final Answer 0035
 Kappes Fast Track Z79 B93
 Kappes Fast Track S131 Z79

BW	70	CE	19	DOC	11.4
BWR	N/A	BW	-2.8	CW	32.3
WW	684	WW	65	YG	-.11
WWR	N/A	YW	111	Marb	.73
YW	1286	ADG	.28	BF	.026
YWR	N/A	MCE	12	REA	.83
ADG	3.76	Milk	24	API	157
		MWW	56	TI	76
		Stay	9		

What a set of numbers, low birth and high growth. These Bismark cattle continue to get it done and this son is proof of that. He's long sided, big bellied, big hipped, smooth made, sound structured, and hairy as a yak.



Kappes Bismarck D24

Purebred Angus Bull

ASA#(3106063) BD: 2-27-16 Twin Tattoo: D24

G A R Grid Maker
 S A V Bismarck 5682
 S A V Abigale 0451
 S A V Final Answer 0035
 Kappes Barbara Z124 B16
 Kappes Barbara 3419 Z124

BW	64	CE	19	DOC	11.4
BWR	N/A	BW	-3.2	CW	31.2
WW	696	WW	65	YG	-.09
WWR	N/A	YW	110	Marb	.78
YW	1191	ADG	.28	BF	.029
YWR	N/A	MCE	12	REA	.77
ADG	3.09	Milk	25	API	161
		MWW	57	TI	78
		Stay	8		

Here's a moderate framed smooth made, heifer bull prospect.



Kappes Bismarck D11

Purebred Angus Bull

ASA#(3106052) BD: 2-23-16 Twin Tattoo: D11

G A R Grid Maker
 S A V Bismarck 5682
 S A V Abigale 0451
 Sitz Upward 307R
 Kappes Eline Lady 8K26 B187
 LBK Eline Lady 8K26

BW	65	CE	16	DOC	10.6
BWR	N/A	BW	-1.5	CW	36.6
WW	608	WW	66	YG	-.12
WWR	N/A	YW	115	Marb	.70
YW	1205	ADG	.30	BF	.014
YWR	N/A	MCE	11	REA	.82
ADG	3.73	Milk	28	API	144
		MWW	61	TI	75
		Stay	7		

Long sided, complete made, soft sided Bismark son.



Sons of S A V International 2020

Black Homo. Polled Purebred Angus Bull ASA#2839442 BD: 2-20-12 Tattoo: 2020
 S A V Harvester 0338 x S A V Emblynette 5483
 EPDs: -1 2.6 85 141 .35 -1 34 76 0 9.7 Carcass: 58.0 .19 .63 .082 .68 88 75



Kappes Inter D61

Purebred Angus Bull
 ASA#(3106094) BD: 3-6-16 Tattoo: D61

S A V Harvester 0338
 S A V International 2020
 S A V Emblynette 5483
 Bon View Traveler 2146
 J K Miss Georgia 088
 J K Miss Georgia 602

BW	87 ET	CE	4	DOC	6.6
BWR	N/A	BW	1.4	CW	39.6
WW	721	WW	64	YG	.17
WWR	N/A	YW	112	Marb	.74
YW	1233	ADG	.30	BF	.06
YWR	N/A	MCE	5	REA	.33
ADG	3.20	Milk	31	API	97
		MWW	63	TI	68
		Stay	2		

The Georgia 088 donor has sure made her mark in our herd continually raising high performing cattle. This son is proof of that, he is big backed, square hipped, stout constructed, and soft sided.



Kappes Inter D271

Purebred Angus Bull
 ASA#(3106302) BD: 3-26-16 Tattoo: D271

BW	96	CE	3	DOC	10.0
BWR	90	BW	2.8	CW	55.1
WW	817	WW	82	YG	.21
WWR	113	YW	136	Marb	.73
YW	1363	ADG	.34	BF	.079
YWR	106	MCE	3	REA	.51
ADG	3.41	Milk	33	API	95
		MWW	74	TI	76
		Stay	4		

S A V Harvester 0338
 S A V International 2020
 S A V Emblynette 5483
 Sitz Upward 307R
 Kappes Phantasy U606 Z152
 Kappes Phantasy M326 U606

Added power and performance, he's in the top one percent of the breed on WW, YW, ADG, Milk, MWW, and CW. This International son is high performing, long sided, and soft sided.



Kappes Inter D151

Purebred Angus Bull
 ASA#(3106183) BD: 3-18-16 Tattoo: D151

BW	93	CE	6	DOC	8.7
BWR	93	BW	1.9	CW	42.7
WW	671	WW	70	YG	.00
WWR	97	YW	117	Marb	.71
YW	1347	ADG	.29	BF	.026
YWR	105	MCE	1	REA	.60
ADG	4.21	Milk	32	API	98
		MWW	67	TI	71
		Stay	1		

S A V Harvester 0338
 S A V International 2020
 S A V Emblynette 5483
 Morgans Direction 111 9901
 RDDA Ms. MRG Dir 1165T Of SCC
 RDDA Ms. 049 1243R Of SCC



Kappes M Maker D409

Purebred Angus Bull

ASA#(3106440) BD: 4-13-16 Tattoo: D409

BW	91	CE	4	DOC	11.4
BWR	95	BW	1.7	CW	48.8
WW	747	WW	68	YG	.25
WWR	108	YW	126	Marb	.67
YW	1158	ADG	.36	BF	.064
YWR	N/A	MCE	6	REA	.20
ADG	2.57	Milk	25	API	95
		MWW	59	TI	68
		Stay	8		

Boyd On Target 1083
 Stevenson Money Maker R185
 Stevenson Clova Pride L888
 Berbos Traveler 044 030 3267
 Kappes SAV E Pride 7021 U127
 S A V Pride 7021

Stevenson Money Maker, Sire



Kappes B Trav D230

Purebred Angus Bull

ASA#(3106262) BD: 3-23-16 Tattoo: D230

Berbos Traveler 044-030
 Berbos Traveler 044 030 3267
 Sitz Barbara Perfection 436
 Boyd New Day 8005
 Kappes SAV E Pride 9173 T609
 S A V Pride 9173

BW	79	CE	14	DOC	10.6
BWR	109	BW	-1.7	CW	29.8
WW	701	WW	56	YG	.02
WWR	101	YW	103	Marb	.57
YW	1267	ADG	.29	BF	.028
YWR	99	MCE	7	REA	.41
ADG	3.52	Milk	30	API	123
		MWW	58	TI	65
		Stay	8		



KAF X2

Purebred Red Angus Bull

REG#3522642 BD: 2-22-16 Tattoo: X2

BW	94	CED	2	Stay	11
BWR	N/A	BW	-1	Marb	.44
WW	635	WW	71	YG	.08
WWR	N/A	YW	113	CW	37
YW	1089	Milk	21	REA	-.09
YWR	N/A	ME	3	Fat	-.02
ADG	2.84	HPG	12		
		CEM	3		

Lchmn No Equal 1174D
 JDB Equals Thunder 302N
 DIG Mattie 622A
 HXC Big Iron 0024X
 KFRA Ms. Big Iron B93
 KFRA Ms. Thump Y205

JDB Equals Thunder, Sire



Here's a smooth made, bold sprung, good necked, soft pasterned, purebred Red Angus bull.



ELITE BRED FEMALES



26 • ELITE BRED FEMALES • LOTS 100-102



Kappes Lacey W48 C332

Black Dbl. Polled Purebred Female

ASA#2970671 BD: 4-2-15 Tattoo: C332



Kappes Megatron A12, AI Sire

A.I. Sire/Date: Kappes Megatron A12 (SM) 6-1-16
 Ultrasound safe to A.I. sire: Heifer • Est. Due Date: 3-8-17
 Est. PM EPDs: 12 .50 68 103 .23 10 20 54 12 11.3
 Carcass: 32.1 -.36 .20 -.06 .93 134 75
 Pasture Sire/Dates: Kappes Inter. R61 C69 (AN) 6-24 to 7-27-16

Remington Lock N Load 54U
 STF Royal Affair Z44M
 STF Onyx 451W
 GW Lucky Man 644N
 Kappes Lacey T424 W48
 Kappes Lacey T424

DAM	#Calves	BWR	WWR	YWR
Production	7	102	104	100

BW	80	CE	10	DOC	12.5
BWR	104	BW	2.1	CW	33.7
WW	733	WW	67	YG	-.26
WWR	113	YW	102	Marb	.10
YW	1107	ADG	.22	BF	-.064
YWR	108	MCE	10	REA	.62
		Milk	20	API	123
		MWW	53	TI	69
		Stay	12		

Every year when it comes time to sort the bred heifers for the bull sale, it's always a little bitter sweet. It's tough to part with some of your favorite females in the herd, but the satisfaction comes when the customers come back and tell you how well the cattle have worked in their programs. This female that we are leading off the sale with is definitely one of my favorites. She is long and extended from the side, elegant about her head and neck, bold in her upper and lower rib, big backed and stout constructed. Bred back to Kappes Megatron A12 with a heifer calf, she's sure to make a quick turn on investment. This is certainly one that is hard to part with, but we are glad to offer one of our best. Bid early and often.



Kappes Una W485 C173

Black Dbl. Polled 1/2 SM 1/2 AN Female

ASA#2970518 BD: 3-23-15 Tattoo: C173

BW	94	CE	4	DOC	10.0	DAM	#Calves	BWR	WWR	YWR
BWR	87	BW	5.0	CW	57.1	Production	5	85	105	108
WW	715	WW	88	YG	-.04					
WWR	110	YW	135	Marb	.48					
YW	1137	ADG	.29	BF	-.008					
YWR	111	MCE	6	REA	.59					
		Milk	14	API	.99					
		MWW	58	TI	.77					
		Stay	9							

S A V Net Worth 4200
 W/C Total Value 19A
 3C Crocus G374 BZ
 LT Mullen 6803 Of EA
 Kappes Una N176 W485
 Kappes Una N176

Long and extended, soft sided half blood daughter out of Total Value. She's in the top one percent WW EPD and top two YW EPD. If you are looking for added growth in a female, here she is.

A.I. Sire/Date: Berbos Traveler 044 030 3267 (AN) 6-19-16
 Ultrasound safe to A.I. sire: Heifer • Est. Due Date: 3-26-17
 Est. PM EPDs: 8 2.05 78 129 .32 7 19 58 9 10.75
 Carcass: 49.9 -.01 .58 .00 .56 120 79
 Pasture Sire/Dates: Kappes I. Man A633 C75 (SM) 6-24 to 7-27-16



Kappes Whitney T381 C189

Black Dbl. Polled 5/8 SM 3/8 AN Female

ASA#2970531 BD: 3-24-15 Tattoo: C189

BW	89	CE	3	DOC	11.2	DAM	#Calves	BWR	WWR	YWR
BWR	93	BW	4.7	CW	41.0	Production	9	88	105	102
WW	654	WW	73	YG	-.16					
WWR	101	YW	108	Marb	.33					
YW	1006	ADG	.22	BF	-.011					
YWR	99	MCE	6	REA	.80					
		Milk	22	API	.95					
		MWW	58	TI	.69					
		Stay	12							

TNT Tuition U238
 TNT Axis X307
 TNT Miss U27
 Berbos Traveler 044 030 3267
 Kappes Whitney T381
 Kappes Lady 600C F240

A maternal sib to one of our high selling bred heifers in our 2016 sale. Soft sided, level built, good balanced female.



Kappes Whitney T381 B87, \$8500 Maternal Sib

A.I. Sire/Date: W/C Lock N Load 2101C (SA) 5-30-16
 Ultrasound safe to A.I. sire: Heifer • Est. Due Date: 3-6-17
 Est. PM EPDs: 8 2.15 70 113 .28 6 20 55 9 11.15
 Carcass: 40.85 -.15 .50 .00 .82 120 75
 Pasture Sire/Dates: Kappes Inter. R61 C69 (AN) 6-24 to 7-27-16



LOT 103

Kappes Sadie T635 C86

Black Dbl. Polled Purebred Female

ASA#2970444 BD: 3-11-15 Tattoo: C86



W/C Executive Order 8543B, AI Sire

A.I. Sire/Date: W/C Executive Order 8543B (SM) 6-21-16
 Ultrasound safe to A.I. sire: Heifer • Est. Due Date: 3-28-17
 Est. PM EPDs: 12 -.35 63 103 .26 9 23 54 8 9.3
 Carcass: 31.35 -.32 .17 -.03 1.01 125 73
 Pasture Sire/Dates: Kappes I. Man A633 C75 (SM) 6-24 to 7-27-16

Here's a full sib to our high selling bull in our 2016 sale Kappes Hammertime C505. She's high performing, elegant about her head and neck, big hiped, level built and bold sprung in her upper and lower rib. Sadie T635 has raised some of our high performing cattle and C86 is sure to follow in her mother's footsteps.



Kappes Sadie T635, Dam



Kappes Hammertime 90 C505, \$18,500 Full Brother



Kappes Sadie T635 B22, \$9000 Maternal Sib

Remington Lock N Load 54U
 STF Royal Affair Z44M
 STF Onyx 451W
 Daume Lucky Deal L101
 Kappes Sadie T635
 Kappes Sadie M166

DAM	#Calves	BWR	WWR	YWR
Production	65	96	105	104

BW	95 ET	CE	6	DOC	8.3
BWR	N/A	BW	4.0	CW	35.6
WW	813	WW	61	YG	-.41
WWR	N/A	YW	100	Marb	-.14
YW	1198	ADG	.24	BF	-.065
YWR	N/A	MCE	10	REA	1.10
		Milk	25	API	95
		MWW	56	TI	58
		Stay	9		

LOT 104

Kappes Jena U131 C200

Black Dbl. Polled Purebred Female

ASA#2970539 BD: 3-25-15 Tattoo: C200

BW	94
BWR	87
WW	784
WWR	121
YW	1198
YWR	117

CE	6	DOC	11.9
BW	4.8	CW	57.6
WW	90	YG	-.26
YW	136	Marb	.18
ADG	.29	BF	-.067
MCE	8	REA	.87
Milk	24	API	122
MWW	69	TI	81
Stay	10		

DAM	#Calves	BWR	WWR	YWR
Production	7	99	111	108

Mr. NLC Upgrade U8676
 R&R Chamberlain X744
 R&R Miss Traveler T744
 SS Ebony's Masterpiece
 Kappes Jena U131
 Kappes Jena P80

This Chamberlain daughter is in the top one percent on WW, YW, and ADG EPD. She's long and extended from the side, clean made through her front one third, big hiped, stout constructed, and flexible off of both ends of her skeleton.



Kappes Megatron A12, AI Sire

A.I. Sire/Date: Kappes Megatron A12 (SM) 5-29-16
 Ultrasound safe to A.I. sire: Bull • Est. Due Date: 3-5-17
 Est. PM EPDs: 9 1.85 79 121 .26 9 23 62 11 11.0
 Carcass: 44.05 -.36 .24 -.06 1.05 134 81
 Pasture Sire/Dates: Kappes I. Man A633 C75 (SM) 6-24 to 7-27-16

LOT 105

Kappes Xylia X190 C213

Black Dbl. Polled 5/8 SM 3/8AN Female

ASA#2970554 BD: 3-25-15 Tattoo: C213

BW	81
BWR	102
WW	601
WWR	92
YW	935
YWR	92

CE	6	DOC	13.8
BW	2.0	CW	21.3
WW	53	YG	-.26
YW	81	Marb	.50
ADG	.17	BF	-.038
MCE	13	REA	.64
Milk	29	API	122
MWW	55	TI	66
Stay	13		

DAM	#Calves	BWR	WWR	YWR
Production	5	97	105	99

TNT Tanker U263
 TNT Punch Y260
 TNT Miss T34
 G A R Predestined
 Kappes Xylia H196 X190
 Kappes Lady Dakota H196

A smooth made, deep bodied percentage female.



PVF-J 4P14 Hyb Rookie, AI Sire

A.I. Sire/Date: PVF-J 4P14 Hyb Rookie (SA) 6-22-16
 Ultrasound safe to A.I. sire: Bull • Est. Due Date: 3-29-17
 Est. PM EPDs: 9 1.75 67 105 .24 13 25 58 13 11.1
 Carcass: 35.05 -.24 .32 -.04 .73 125 70
 Pasture Sire/Dates: Kappes Inter. R61 C69 (AN) 6-24 to 7-27-16



Kappes Sadie M166, Dam



Kappes Sadie M166 C532

Black Homo. Polled Purebred Female

ASA#2970854 BD: 2-27-15 Tattoo: C532



Kappes Megatron A12, AI Sire

A.I. Sire/Date: Kappes Megatron A12 (SM) 6-15-16
 Ultrasound safe to A.I. sire: Bull • Est. Due Date: 3-22-17
 Est. PM EPDs: 13 .15 75 112 .23 11 23 60 12 8.45
 Carcass: 36.35 -.36 .25 -.05 1.07 142 81
 Pasture Sire/Dates: Kappes Inter. R61 C69 (AN) 6-24 to 7-27-16

Triple C Singletary S3H
 CCR Cowboy Cut 5048Z
 CCR Ms. 4045 Time 7322T
 PVF Preferred Edge 717G
 Kappes Sadie M166
 Kappes Stop Light J35

DAM	#Calves	BWR	WWR	YWR
Production	139	104	119	107

BW	95 ET	CE	13	DOC	6.8
BWR	N/A	BW	1.4	CW	42.2
WW	725	WW	82	YG	-.27
WWR	N/A	YW	119	Marb	.20
YW	1124	ADG	.23	BF	-.042
YWR	N/A	MCE	13	REA	.90
		Milk	25	API	139
		MWW	65	TI	82
		Stay	12		

A direct Sadie daughter that not only has a good EPD profile, but is balanced on foot as well. She is powerfully built, long sided, big back, big hip, wide constructed, stout and heavy muscled.



Kappes Sadie M166 C535

Black Homo. Polled Purebred Female

ASA#2970857 BD: 2-28-15 Tattoo: C535

BW	98 ET	CE	11	DOC	6.0
BWR	N/A	BW	2.3	CW	37.3
WW	632	WW	69	YG	-.23
WWR	N/A	YW	108	Marb	-.12
YW	1018	ADG	.24	BF	-.029
YWR	N/A	MCE	9	REA	.84
		Milk	23	API	108
		MWW	58	TI	65
		Stay	9		

DAM	#Calves	BWR	WWR	YWR
Production	139	104	119	107
		SVF Steel Force S701		
		FBF1 Combustible		
		Lazy H Burn Bay Burn R34		
		PVF Preferred Edge 717G		
		Kappes Sadie M166		
		Kappes Stop Light J35		

A Combustible daughter out of Sadie that is flat shouldered, complete made and level built.

Pasture Sire/Dates: Kappes I. Man A633 C75 (SM) 6-24 to 7-27-16
 Ultrasound safe to Pasture sire: Unknown • Est. Due Date: 4-1-17
 Est. PM EPDs: 10 1.8 60 94 .21 9 22 52 9 8.55
 Carcass: 28.4 -.26 .04 -.02 .85 112 64



Kappes Sadie M166 C125

Black Dbl. Polled Purebred Female

ASA#2970476 BD: 3-18-15 Tattoo: C125

BW	95 ET	CE	9	DOC	5.0
BWR	N/A	BW	.5	CW	22.5
WW	738	WW	62	YG	-.40
WWR	N/A	YW	88	Marb	-.03
YW	1055	ADG	.16	BF	-.069
YWR	N/A	MCE	10	REA	.84
		Milk	14	API	119
		MWW	45	TI	64
		Stay	13		

DAM	#Calves	BWR	WWR	YWR
Production	139	104	119	107
		SS Ebonys Grandmaster		
		WS A Step Up X27		
		WS Ms. Macho U38		
		PVF Preferred Edge 717G		
		Kappes Sadie M166		
		Kappes Stop Light J35		

Here's a direct daughter out of Sadie M166. She's a big framed, stout constructed, big middle, wide built Step Up daughter that will inject performance into her offspring.



Barstow Cash, AI Sire

A.I. Sire/Date: Barstow Cash (AN) 5-30-16
 Ultrasound safe to A.I. sire: Heifer • Est. Due Date: 3-6-17
 Est. PM EPDs: 14 -1.0 70 115 .29 12 14 49 10 10.45
 Carcass: 37.4 -.28 .31 -.01 1.18 143 75
 Pasture Sire/Dates: Kappes Inter. R61 C69 (AN) 6-24 to 7-27-16



Kappes Lacey C116

Black DbI. Polled Purebred Female

ASA#2970470 BD: 3-17-15 Tattoo: C116



SS/PRS High Voltage 244X, AI Sire

A.I. Sire/Date: SS/PRS High Voltage 244X (SM) 5-30-16
 Ultrasound safe to A.I. sire: Heifer • Est. Due Date: 3-6-17
 Est. PM EPDs: 10 2.15 68 91 .14 9 18 52 8 11.75
 Carcass: 26.45 -.41 .04 -.05 1.09 111 68
 Pasture Sire/Dates: Kappes I. Man A633 C75 (SM) 6-24 to 7-27-16



Kappes Lacey T91 A201, \$7,500
Maternal Sister

Wheatland High Octane 169Y
 Kappes Northern Octane
 Kappes Sadie T635
 SS Ebony's Masterpiece
 Kappes Lacey T91
 Kappes Lacey N271

DAM	#Calves	BWR	WWR	YWR
Production	8	92	104	99

BW	89	CE	7	DOC	10.4
BWR	93	BW	3.6	CW	30.3
WW	708	WW	67	YG	-.40
WWR	109	YW	93	Marb	-.07
YW	1053	ADG	.16	BF	-.039
YWR	103	MCE	8	REA	1.21
		Milk	25	API	101
		MWW	59	TI	63
		Stay	9		

Lacey T91 has sure done her job constantly raising high quality offspring. A maternal sister to C116 was one of our high selling bred heifers in our 2015 sale going to John Bray in North Carolina. C116 is long and extended from the side, bold through the center portion of her body, elegant about her head and neck and sound structured. Bred to High Voltage with a heifer calf, she is sure to make her mark early on.



Kappes Sadie A438 C214

Homo. Black DbI. Polled 3/8 SM 5/8 AN Female

ASA#2970555 BD: 3-25-15 Tattoo: C214

BW	101	CE	8	DOC	10.9
BWR	78	BW	3.0	CW	46.5
WW	668	WW	73	YG	-.06
WWR	103	YW	121	Marb	.62
YW	1069	ADG	.30	BF	-.014
YWR	105	MCE	11	REA	.52
		Milk	24	API	124
		MWW	60	TI	76
		Stay	12		

DAM	#Calves	BWR	WWR	YWR
Production	2	87	95	105

Berbos Traveler 044-030
 Berbos Traveler 044 030 3267
 Sitz Barbara Perfection 436
 Kappes 70:70 Beef T260
 Kappes Sadie W612 A438
 Kappes Sadie M166 W612

Soft sided, complete made female.

Pasture Sire/Dates: Kappes I. Man A633 C75 (SM) 6-24 to 7-27-16
 Ultrasound safe to Pasture sire: Unknown • Est. Due Date: 3-30-17
 Est. PM EPDs: 8 2.15 62 100 .24 10 23 54 11 11.0
 Carcass: 33.0 -.18 .41 -.02 .69 120 69



Kappes Porsche N193 C217

Black DbI. Polled Purebred Female

ASA#2970558 BD: 3-26-15 Tattoo: C217

BW	91	CE	8	DOC	10.2
BWR	90	BW	3.9	CW	43.5
WW	715	WW	77	YG	-.16
WWR	110	YW	115	Marb	.14
YW	1130	ADG	.23	BF	-.029
YWR	111	MCE	11	REA	.68
		Milk	18	API	121
		MWW	57	TI	73
		Stay	11		

DAM	#Calves	BWR	WWR	YWR
Production	12	96	105	101

Triple C Singletary S3H
 CCR Drover 9094A
 CCR Ms. 4045 Time 7322T
 PVF Preferred Edge 717G
 Kappes Porsche N193
 Kappes Craftman J157

Long sided purebred Simmental female sired by a full sib to CCR Cowboy Cut.

Pasture Sire/Dates: Kappes Inter. R61 C69 (AN) 6-24 to 7-27-16
 Ultrasound safe to Pasture Sire: Unknown • Est. Due Date: 4-25-17
 Est. PM EPDs: 6 2.65 71 113 .27 8 25 60 7 8.4
 Carcass: 41.55 .07 .53 .04 .47 118 75



Kappes Xenos T259 C190

Black Baldy Dbl. Polled 1/2 SM 1/2 AN Female
 ASA#2970532 BD: 3-24-15 Tattoo: C190



Kappes Trailblazer S516, AI Sire

A.I. Sire/Date: Kappes Trailblazer S516 (SM) 5-30-16
 Ultrasound safe to A.I. sire: Bull • Est. Due Date: 3-6-17
 Est. PM EPDs: 15 -1.45 62 93 .19 11 17 48 9 5.6
 Carcass: 22.75 -.34 .08 -.06 .76 117 66
 Pasture Sire/Dates: Kappes I. Man A633 C75 (SM) 6-24 to 7-27-16

Remington Lock N Load 54U
 W/C Store N Go 562Z
 D W Adventure Girl 562R
 Berbos Traveler 044 030 3267
 Kappes Xenos T259
 Kappes Xenos N88

DAM	#Calves	BWR	WWR	YWR
Production	8	116	95	95

BW	60	CE	16	DOC	11.4
BWR	128	BW	-4.1	CW	13.1
WW	581	WW	51	YG	-.29
WWR	89	YW	82	Marb	.26
YW	950	ADG	.19	BF	-.060
YWR	93	MCE	10	REA	.72
		Milk	19	API	143
		MWW	45	TI	67
		Stay	9		

A moderate framed, bold sprung, good structured baldy female out of Store N Go. She's in the top 15 percent on CE, top 2 on BW and top 15 on API.



Kappes Winter S462C236

Black Dbl. Polled 3/4 SM 1/4 AN Female
 ASA#2970577 BD: 3-26-15 Tattoo: C236

BW	88
BWR	94
WW	627
WWR	96
YW	981
YWR	96

CE	8	DOC	9.8
BW	3.4	CW	34.0
WW	69	YG	-.16
YW	100	Marb	.18
ADG	.19	BF	-.048
MCE	10	REA	.42
Milk	15	API	117
MWW	50	TI	64
Stay	14		

DAM	#Calves	BWR	WWR	YWR
Production	11	96	96	100
		DCR Mr. Moon Shine X102		
		TNT Brick House Z264		
		TNT Miss U110		
		TR Mr. Scotch 9440 9771		
		Kappes Winter S462		
		Kappes Sudan Impact K301		

A soggy made good built 3/4 blood Simmental.



Kappes Megatron A12, AI Sire

A.I. Sire/Date: Kappes Megatron A12 (SM) 5-30-16
 Ultrasound safe to A.I. sire: Bull • Est. Due Date: 3-6-17
 Est. PM EPDs: 11 1.15 69 102 .21 10 18 52 13 9.95
 Carcass: 32.25 -.31 .24 -.05 .83 135 75
 Pasture Sire/Dates: Kappes Inter. R61 C69 (AN) 6-24 to 7-27-16



Kappes Natalee X171 C272

Homo. Black Dbl. Polled 3/4 SM 1/4 AN Female
 ASA#2970612 BD: 3-29-15 Tattoo: C272

BW	90
BWR	92
WW	711
WWR	109
YW	1081
YWR	106

CE	2	DOC	10.4
BW	5.2	CW	47.5
WW	75	YG	-.29
YW	117	Marb	.41
ADG	.26	BF	-.042
MCE	8	REA	1.04
Milk	25	API	119
MWW	63	TI	72
Stay	12		

DAM	#Calves	BWR	WWR	YWR
Production	5	94	102	109
		R&R Chamberlain X744		
		Kappes Chamber 530 Z631		
		Kappes Sadie T635		
		G A R PRedestined		
		Kappes Natalee 143N X171		
		GSR Ms. Joker 143N		

A big bodied, long sided, Chamberlin granddaughter.



Kappes Megatron A12, AI Sire

A.I. Sire/Date: Kappes Megatron A12 (SM) 6-1-16
 Ultrasound safe to A.I. sire: Heifer • Est. Due Date: 3-8-17
 Est. PM EPDs: 8 2.05 72 111 .25 9 23 59 12 10.25
 Carcass: 39.0 -.37 .336 -.05 1.14 137 79
 Pasture Sire/Dates: Kappes Inter. R61 C69 (AN) 6-24 to 7-27-16



Val

Kappes Megatron A12, Maternal Sib



SWC Ruby Ynona 139Y, Dam



Kappes Ynona 139Y C81

Black Dbl. Polled Purebred Female

ASA#2970439 BD: 3-10-15 Tattoo: C81



S A V Bismarck 5682, AI Sire

A.I. Sire/Date: S A V Bismarck 5682 (AN) 5-31-16
 Ultrasound safe to A.I. sire: Bull • Est. Due Date: 3-7-17
 Est. PM EPDs: 13 --.7 66 105 .24 10 22 55 6 11.4
 Carcass: 31.35 -.35 .37 -.04 1.08 136 75
 Pasture Sire/Dates: Kappes I. Man A633 C75 (SM) 6-24 to 7-27-16

Yardley Impressive T371
 Yardley High Regard W242
 Miss Yardley T68
 Mr. NLC Upgrade U8676
 SWC Ruby Ynona 139Y
 JM Miss Olivia-L36

DAM	#Calves	BWR	WWR	YWR
Production	21	102	105	

BW	83 ET	CE	5	DOC	11.6
BWR	N/A	BW	1.3	CW	32.6
WW	634	WW	67	YG	-.36
WWR	N/A	YW	102	Marb	-.01
YW	1003	ADG	.22	BF	-.045
YWR	N/A	MCE	6	REA	1.04
		Milk	21	API	98
		MWW	54	TI	67
		Stay	5		

Here's a maternal sib to one of our lead herd sires Kappes Megatron A12. This High Regard daughter is soft sided, stout, clean fronted, level built and flexible off of both ends of her skeleton.



Kappes Nancy U110 C248

Black Dbl. Polled Purebred Female

ASA#2970589 BD: 3-27-15 Tattoo: C248

BW	87	CE	6	DOC	9.1
BWR	95	BW	1.8	CW	28.2
WW	633	WW	63	YG	-.42
WWR	97	YW	94	Marb	-.23
YW	990	ADG	.19	BF	-.040
YWR	97	MCE	8	REA	1.23
		Milk	22	API	98
		MWW	53	TI	59
		Stay	11		

DAM	#Calves	BWR	WWR	YWR
Production	7	103	102	105

Wheatland High Octane 169Y
 Kappes Northern Octane
 Kappes Sadie T635
 Kappes U Are The Best N8
 Kappes Nancy U110
 BR Miss Joker 376N

A moderate framed, smooth made, bold sprung Northern Octane daughter.



Kappes Trailblazer S516, AI Sire

A.I. Sire/Date: Kappes Trailblazer S516 (SM) 5-30-16
 Ultrasound safe to A.I. sire: Heifer • Est. Due Date: 3-6-17
 Est. PM EPDs: 10 1.5 68 98 .19 10 18 52 10 4.45
 Carcass: 30.3 -.40 -.17 -.06 1.02 105 64
 Pasture Sire/Dates: Kappes I. Man A633 C75 (SM) 6-24 to 7-27-16



Kappes Tayla 4027T C291

Black Homo. Polled 1/2 SM 1/2 AN Female

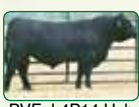
ASA#2970630 BD: 3-30-15 Tattoo: C291

BW	84	CE	8	DOC	8.7
BWR	99	BW	1.8	CW	31.0
WW	715	WW	69	YG	-.13
WWR	110	YW	99	Marb	.56
YW	1017	ADG	.19	BF	-.004
YWR	100	MCE	9	REA	.64
		Milk	18	API	120
		MWW	52	TI	72
		Stay	9		

DAM	#Calves	BWR	WWR	YWR
Production	8	107	97	96

S A V Net Worth 4200
 3C Crocus G374 BZ
 SRS J914 Preferred Beef
 Black Balancer 4027
 Frosty Focus 122

A stout, powerfully built Total Value half blood female.



PVF-J 4P14 Hyb Rookie, AI Sire

A.I. Sire/Date: PVF-J 4P14 Hyb Rookie (SA) 6-2-16
 Ultrasound safe to A.I. sire: Twins (H/B) • Est. Due Date: 3-9-17
 Est. PM EPDs: 10 1.65 74 114 .25 11 20 57 11 8.55
 Carcass: 39.9 -.18 .35 -.02 .73 128 75
 Pasture Sire/Dates: Kappes I. Man A633 C75 (SM) 6-24 to 7-27-16



Kappes Hailey A410 C29

Black Dbl. Polled Purebred Female

ASA#2970398 BD: 3-1-15 Tattoo: C29



Kappes Megatron A12, AI Sire

A.I. Sire/Date: Kappes Megatron A12 (SM) 6-4-16
 Ultrasound safe to A.I. sire: Bull • Est. Due Date: 3-11-17
 Est. PM EPDs: 13 .35 76 115 .25 12 23 61 11 6.9
 Carcass: 38.4 -.38 .15 -.07 1.02 134 79
 Pasture Sire/Dates: Kappes Inter. R61 C69 (AN) 6-24 to 7-27-16

CNS Dream On L186
 Kappes Trailblazer S516
 Kappes Sadie M166
 OLF Thor X54
 Kappes Hailey S335 A410
 Kappes Hailey S335

DAM	#Calves	BWR	WWR	YWR
Production	2	94	120	118

BW	89	CE	12	DOC	3.7
BWR	93	BW	1.8	CW	46.3
WW	833	WW	83	YG	-.31
WWR	128	YW	125	Marb	-.01
YW	1246	ADG	.26	BF	-.079
YWR	122	MCE	14	REA	.80
		Milk	24	MWW	66
		API	123	Stay	10
		TI	77		

Here's a Trailblazer daughter that is in the top two percent on both WW and YW EPD. She's long and extended from the side, bold through the center portion of her body and big footed.



Kappes Sadie W615 C315

Homo. Black Homo. Polled Purebred Female

ASA#2970654 BD: 4-1-15 Tattoo: C315

BW	89
BWR	93
WW	63
WWR	97
YW	1011
YWR	99

CE	11	DOC	10.3
BW	2.9	CW	35.0
WW	75	YG	-.28
YW	103	Marb	.36
ADG	.18	BF	-.038
MCE	12	REA	.88
Milk	19	API	142
MWW	56	TI	79
Stay	14		

DAM	#Calves	BWR	WWR	YWR
Production	6	93	94	101

Triple C Singletary S3H
 CCR Cowboy Cut 5048Z
 CCR Ms. 4045 Time 7322T
 Triple C Invasion R47K
 Kappes Sadie M166 W615
 Kappes Sadie M166

Moderate, bold sprung wide built, stout made Cowboy Cut daughter.



J Bar J Nightride 225Z, AI Sire

A.I. Sire/Date: J Bar J Nightride 225Z (SA) 5-30-16
 Ultrasound safe to A.I. sire: Bull • Est. Due Date: 3-6-17
 Est. PM EPDs: 17 -.75 64 95 .20 12 20 51 12 12.0
 Carcass: 25.3 -.24 .67 -.03 .72 167 85
 Pasture Sire/Dates: Kappes I. Man A633 C75 (SM) 6-24 to 7-27-16



Kappes Rae S120 C324

Black Dbl. Polled Purebred Female

ASA#2970663 BD: 4-2-15 Tattoo: C324

BW	83
BWR	100
WW	646
WWR	99
YW	987
YWR	97

CE	7	DOC	9.4
BW	2.3	CW	24.9
WW	60	YG	-.52
YW	87	Marb	-.05
ADG	.17	BF	-.079
MCE	12	REA	1.18
Milk	21	API	110
MWW	51	TI	62
Stay	13		

DAM	#Calves	BWR	WWR	YWR
Production	9	106	95	96

R&R Chamberlain X744
 Kappes Chamber 530 Z631
 Kappes Sadie T635
 Daume Lucky Deal L101
 Kappes Rae S120
 Kappes Rae M329

Thick made, big bodied Chamberlin granddaughter.



S A V Bismarck 5682, AI Sire

A.I. Sire/Date: S A V Bismarck 5682 (AN) 5-30-16
 Ultrasound safe to A.I. sire: Heifer • Est. Due Date: 3-6-17
 Est. PM EPDs: 14 -.2 63 97 .22 14 22 53 10 10.3
 Carcass: 27.5 -.43 .35 -.06 1.15 141 72
 Pasture Sire/Dates: Kappes I. Man A633 C75 (SM) 6-24 to 7-27-16



ALC Treasure C50P, Grandam



Kappes Maxi Z608 C403

Black Baldy Dbl. Polled 3/4 SM 1/4 AN Female
 ASA#2970740 BD: 4-13-15 Tattoo: C403

Pasture Sire/Dates: Kappes I. Man A633 C75 (SM) 6-24 to 7-27-16
 Ultrasound safe to Pasture sire: Unknown • Est. Due Date: 4-10-17
 Est. PM EPDs: 6 2.8 61 89 .18 8 23 53 8 10.6
 Carcass: 27.2 -.30 .15 -.02 .96 109 65

Wheatland High Octane 169Y
 Kappes Northern Octane
 Kappes Sadie T635
 WAGR Dream Catcher 03R
 Kappes Maxi Lou Z608
 ALC Treasure C50P

DAM	#Calves	BWR	WWR	YWR
Production	3	92	103	104

BW	95	CE	4	DOC	10.1
BWR	86	BW	4.3	CW	34.9
WW	714	WW	70	YG	-.30
WWR	110	YW	99	Marb	.11
YW	1090	ADG	.18	BF	-.022
YWR	107	MCE	7	REA	1.06
		Milk	24	API	92
		MWW	59	TI	62
		Stay	7		

A blaze faced Northern Octane 3/4 blood daughter that is good balanced, bold sprung and stout made.



Kappes Sadie S508 C352

Black Homo. Polled Purebred Female
 ASA#2970691 BD: 4-4-15 Tattoo: C352

BW	104	CE	8	DOC	7.4	DAM	#Calves	BWR	WWR	YWR
BWR	75	BW	4.8	CW	48.8	Production	9	98	104	109
WW	723	WW	80	YG	-.21					
WWR	111	YW	121	Marb	.16					
YW	1141	ADG	.26	BF	-.049					
YWR	112	MCE	10	REA	.76					
		Milk	20	API	126					
		MWW	60	TI	75					
		Stay	13							

WS Beef King W107
 CLRS Archie 136 A
 Hook's Ultimatum 36U
 SRS J914 Preferred Beef
 Kappes Sadie S508
 Kappes Sadie M166

A long sided, powerfully built Archie daughter that is in the top three percent for both WW and YW EPD.



Kappes Megatron A12, AI Sire

A.I. Sire/Date: Kappes Megatron A12 (SM) 6-18-16
 Ultrasound safe to A.I. sire: Heifer • Est. Due Date: 3-25-17
 Est. PM EPDs: 10 1.85 74 113 .25 10 21 58 12 8.75
 Carcass: 39.65 -.33 .23 -.05 1.00 136 78
 Pasture Sire/Dates: Kappes I. Man A633 C75 (SM) 6-24 to 7-27-16



Kappes Paisley 224 C92

Black Star Homo. Polled 3/8 SM 5/8 AN Female
 ASA#2970450 BD: 3-12-15 Tattoo: C92

BW	94 ET	CE	5	DOC	10.9	DAM	#Calves	BWR	WWR	YWR
BWR	N/A	BW	2.6	CW	35.3	Production	92	82	109	110
WW	519	WW	67	YG	-.17					
WWR	N/A	YW	103	Marb	.30					
YW	921	ADG	.22	BF	-.023					
YWR	N/A	MCE	3	REA	.68					
		Milk	14	API	86					
		MWW	48	TI	64					
		Stay	1							

Mr. NLC Upgrade U8676
 Sandeen Upper Class 2386
 Sandeen Donna 7386
 O C C Kava 784K
 P A R ' S Kava Miss 224
 PAR'S Traveling Duty

This star headed Upper Class daughter is out of one of our highest performing purebred Angus donors. She's big bodied, stout pinned, big footed, and flexible in her lower joints.

A.I. Sire/Date: Kappes Megatron A12 (SM) 5-30-16
 Ultrasound safe to A.I. sire: Bull • Est. Due Date: 3-6-17
 Est. PM EPDs: 9 .75 68 104 .23 6 17 51 6 10.5
 Carcass: 32.9 -.31 .30 -.04 .96 116 71
 Pasture Sire/Dates: Kappes I. Man A633 C75 (SM) 6-24 to 7-27-16



LOT 124

Kappes Paisley 224 C510

Black Baldy Homo. Polled 1/2 SM 1/2 AN Female
 ASA#2970833 BD: 2-22-15 Tattoo: C510



PVF-J 4P14 Hyb Rookie, AI Sire

A.I. Sire/Date: PVF-J 4P14 Hyb Rookie (SA) 6-24-16
 Ultrasound safe to A.I. sire: Heifer • Est. Due Date: 3-31-17
 Est. PM EPDs: 11 1.55 71 119 .30 9 16 51 8 9.6
 Carcass: 43.3 -.22 .15 -.04 .81 117 69
 Pasture Sire/Dates: Kappes I. Man A633 C75 (SM) 6-24 to 7-27-16

Remington On Target 2S
 Lock N Load 54U
 Bar15 Miss Knight 78E-51G
 O C C Kava 784K
 P A R ' S Kava Miss 224
 PAR'S Traveling Duty

DAM	#Calves	BWR	WWR	YWR
Production	21	82	109	110

BW	87 ET	CE	10	DOC	10.8
BWR	N/A	BW	1.6	CW	37.8
WW	580	WW	63	YG	-.21
WWR	N/A	YW	109	Marb	.16
YW	942	ADG	.29	BF	-.028
YWR	N/A	MCE	5	REA	.79
		Milk	9	API	105
		MWW	41	TI	63
		Stay	3		

Here is a Lock N Load daughter out of one of our highest performing purebred Angus donors. She's long and extended through her front one third, bold through the center portion of her body, level built and sound structured.

LOT 125

Kappes Xandy 703X C374

Black Dbl. Polled Purebred Female
 ASA#2970712 BD: 4-9-15 Tattoo: C374

BW	73	CE	10	DOC	9.6
BWR	112	BW	1.2	CW	30.0
WW	693	WW	71	YG	-.39
WWR	107	YW	99	Marb	.02
YW	1035	ADG	.17	BF	-.039
YWR	101	MCE	9	REA	1.15
		Milk	21	API	112
		MWW	56	TI	71
		Stay	8		

DAM	#Calves	BWR	WWR	YWR
Production	5	108	103	95
		Wheatland High Octane 169Y		
		Kappes Northern Octane		
		Kappes Sadie T635		
		CNS Dream On L186		
		JBS Miss Dream On 703X		
		JBS Miss G. Design 504T		

A moderate framed stout constructed, long sided, sound structured Northern Octane daughter.

A.I. Sire/Date: J Bar J Nightride 225Z (SA) 6-18-16
 Ultrasound safe to A.I. sire: Heifer • Est. Due Date: 3-25-17
 Est. PM EPDs: 16 -1.6 62 93 .19 11 20 52 9 11.65
 Carcass: 22.8 -.30 .50 -.03 .85 155 77
 Pasture Sire/Dates: Kappes Inter. R61 C69 (AN) 6-24 to 7-27-16

LOT 126

Kappes Porsche A94 C52

Black Homo. Polled 1/2 SM 1/2 AN Female
 ASA#2970416 BD: 3-6-15 Tattoo: C52

BW	78	CE	14	DOC	13.2
BWR	106	BW	-1.1	CW	2.2
WW	652	WW	58	YG	-.35
WWR	100	YW	90	Marb	.33
YW	912	ADG	.20	BF	-.001
YWR	89	MCE	10	REA	1.22
		Milk	22	API	136
		MWW	51	TI	69
		Stay	8		

DAM	#Calves	BWR	WWR	YWR
Production	2	100	105	95
		Sitz Dash 10277		
		Barstow Cash		
		Barstow Queen W16		
		Wheatland High Octane 169Y		
		Kappes Porsche N289 A94		
		Kappes Porsche N289		

Here's a low CE and BW EPD Barstow Cash half blood daughter.



J Bar J Nightride 225Z, AI Sire

A.I. Sire/Date: J Bar J Nightride 225Z (SA) 5-30-16
 Ultrasound safe to A.I. sire: Bull • Est. Due Date: 3-6-17
 Est. PM EPDs: 18 -2.75 55 89 .21 12 21 49 10 13.45
 Carcass: 18.9 -.28 .66 -.01 .89 170 78
 Pasture Sire/Dates: Kappes Inter. R61 C69 (AN) 6-24 to 7-27-16



Kappes Audrey 3711A C600

Black Dbl. Polled 3/4 SM 1/4 AN Female
ASA#3038062 BD: 3-22-15 Tattoo: C600

BW	83	CE	13	DOC	5.8	DAM	#Calves	BWR	WWR	YWR
BWR	N/A	BW	.7	CW	22.0	Production	2	84	102	
WW	659	WW	61	YG	-.32	OLF Thor X54				
WWR	N/A	YW	86	Marb	.21	Kappes Sonic A469				
YW	975	ADG	.16	BF	-.080	Kappes Sadie M166				
YWR	N/A	MCE	14	REA	.56	WS Pilgrim H182U				
		Milk	27	API	120	Ms. TR Audrey 37111 ET				
		MWW	57	TI	66	T R Ms. Lovana 4008P				
		Stay	10							



A.I. Sire/Date: Kappes Megatron A12 (SM) 6-21-16
Ultrasound safe to A.I. sire: Bull • Est. Due Date: 3-28-17
Est. PM EPDs: 13 -.20 65 95 .20 12 24 56 11 7.95
Carcass: 26.25 -.39 .26 -.07 .90 137 76
Pasture Sire/Dates: Kappes I. Man A633 C75 (SM) 6-24 to 7-27-16



Here's a daughter out of our CE OLF Thor x Sadie M166 son on top of a Pilgrim half-blood daughter that I had a successful show career with. She's moderate framed, elegant about her head and neck, stout pinned, big bellied, big footed, and sound on her feet and legs.



Kappes Trinia A46 C37

Black Dbl. Polled 1/2 SM 1/2 AN Female
ASA#2970404 BD: 3-2-15 Tattoo: C37

BW	79	CE	14	DOC	5.8	DAM	#Calves	BWR	WWR	YWR
BWR	105	BW	.0	CW	36.3	Production	2	105	96	106
WW	685	WW	71	YG	-.14	CNS Dream On L186				
WWR	105	YW	112	Marb	.38	Kappes Trailblazer S516				
YW	1083	ADG	.25	BF	-.018	Kappes Sadie M166				
YWR	106	MCE	11	REA	.63	Sitz Upward 307R				
		Milk	23	API	141	Kappes Trinia U6 A46				
		MWW	58	TI	76	Kappes Trinia U6				
		Stay	9							

Balanced female that has a big spread between birth and growth.

Pasture Sire/Dates: Kappes I. Man A633 C75 (SM) 6-24 to 7-27-16
Ultrasound safe to A.I. sire: Unknown • Est. Due Date: 4-22-17
Est. PM EPDs: 11 .65 61 96 .21 10 22 53 9 8.45
Carcass: 27.9 -.22 .29 -.02 .75 124 67



Kappes Gina U243 C98

Black Dbl. Polled Purebred Female
ASA#2970462 BD: 3-13-15 Tattoo: C98

BW	75	CE	7	DOC	9.7	DAM	#Calves	BWR	WWR	YWR
BWR	110	BW	.5	CW	27.7	Production	7	104	101	101
WW	675	WW	65	YG	-.47	Wheatland Predator 922W				
WWR	104	YW	96	Marb	-.12	Wheatland High Octane 169Y				
YW	1054	ADG	.20	BF	-.068	Wheatland Lady 351N				
YWR	103	MCE	3	REA	1.16	Daume Lucky Deal L101				
		Milk	20	API	105	Kappes Gina U243				
		MWW	52	TI	64	Kappes Gina P95				
		Stay	10							

Here's a heavy muscled, big hipped, stout made High Octane daughter.



A.I. Sire/Date: Kappes Megatron A12 (SM) 5-30-16
Ultrasound safe to A.I. sire: Heifer • Est. Due Date: 3-6-17
Est. PM EPDs: 10 -.3 67 100 .22 6 20 54 11 9.9
Carcass: 29.1 -.46 .09 -.06 1.20 125 73
Pasture Sire/Dates: Kappes I. Man A633 C75 (SM) 6-24 to 7-27-16



Kappes Sadie U49 C452

Black Dbl. Polled Purebred Female
ASA#2970790 BD: 4-25-15 Tattoo: C452

BW	85	CE	12	DOC	10.6	DAM	#Calves	BWR	WWR	YWR
BWR	98	BW	1.1	CW	38.3	Production	6	97	108	109
WW	699	WW	74	YG	-.32	WAGR Dream Catcher 03R				
WWR	108	YW	113	Marb	.29	Kappes Megatron A12				
YW	1117	ADG	.24	BF	-.049	SWC Ruby Ynona 139Y				
YWR	109	MCE	11	REA	.96	GW Luck Man 644N				
		Milk	24	API	142	Kappes Sadie U48				
		MWW	61	TI	80	Kappes Sadie S501				
		Stay	12							

A long sided, thick made Megatron daughter that has a good spread between birth and growth.



A.I. Sire/Date: PVF-J 4P14 Hyb Rookie (SA) 5-30-16
Ultrasound safe to A.I. sire: Bull • Est. Due Date: 3-6-17
Est. PM EPDs: 12 1.3 77 121 .28 12 23 61 12 9.5
Carcass: 43.55 -.27 .22 -.05 .89 131 75
Pasture Sire/Dates: Kappes I. Man A633 C75 (SM) 6-24 to 7-27-16



Kappes Patty A251 C53

Black Dbl. Polled Purebred Female
ASA#2970417 BD: 3-6-15 Tattoo: C53

BW	93	CE	3	DOC	10.9	DAM	#Calves	BWR	WWR	YWR
BWR	88	BW	3.8	CW	45.7	Production	2	98	111	108
WW	760	WW	81	YG	-.29	Yardley Impressive T371				
WWR	117	YW	119	Marb	.01	Yardley High Regard W242				
YW	1106	ADG	.24	BF	-.053	Miss Yardley T68				
YWR	108	MCE	6	REA	.92	Mr. NLC Upgrade U8676				
		Milk	19	API	95	Kappes Patty W178 A251				
		MWW	59	TI	72	Kappes Patty R275 W178				
		Stay	4							

A moderate framed, good necked High Regard purebred.

Pasture Sire/Dates: Kappes Inter. R61 C69 (AN) 6-24 to 7-27-16
Ultrasound safe to Pasture sire: Unknown • Est. Due Date: 4-17-17
Est. PM EPDs: 4 2.6 73 116 .27 5 25 61 3 8.75
Carcass: 42.65 .11 .46 .02 .59 105 74



Kappes Sadie Z619 C91

Black Dbl. Polled Purebred Female
ASA#2970449 BD: 3-12-15 Tattoo: C91

A.I. Sire/Date: Kappes Grand Slam C141 (AN) 5-30-16
Ultrasound safe to A.I. sire: Heifer • Est. Due Date: 3-6-17
Est. PM EPDs: 11 .395 59 85 .16 10 27 56 11 10.8
Carcass: 21.85 -.24 .23 -.01 .80 127 69
Pasture Sire/Dates: Kappes Inter. R61 C69 (AN) 6-24 to 7-27-16

Triple C Singletary S3H
CCR Drover 9094A
CCR Ms. 4045 Time 7322T
R&R Chamberlain X744
Kappes Sadie M166 Z619
Kappes Sadie M166

DAM	#Calves	BWR	WWR	YWR
Production	3	96	106	107

BW	94	CE	6	DOC	10.4
BWR	87	BW	4.5	CW	38.6
WW	671	WW	72	YG	-.29
WWR	103	YW	105	Marb	.20
YW	1024	ADG	.20	BF	-.050
YWR	100	MCE	10	REA	.86
		Milk	23	API	119
		MWW	60	TI	71
		Stay	11		

A moderate framed, stout made, heavy muscled, Drover daughter.

Young Sires

that will impact
the Simmental Breed.

KAPPES MEGATRON A12
ASA#2713755 BD: 3-2-13 Tattoo: A12



WAGR DREAM CATCHER 03R x SWC RUBY YNONA 139Y
EPDs: 13 -1.1 69 105 0.23 9 21 55 11 10.1
Carcass: 30.5 -0.45 0.30 -0.055 1.23 144 81

KAPPES BIG TICKET 971 C521
ASA#2970843 BD: 2-25-15 Tattoo: C521



REMINGTON LOCK N LOAD54U x SWC RUBY YNONA 139Y
EPDs: 9 1.3 68 113 0.28 10 17 50 6 11.3
Carcass: 39.8 -0.57 -0.01 -0.095 1.41 109 70

KAPPES PENDELTON B6
ASA#2840215 BD: 2-22-14 Tattoo: B6



REMINGTON LOCK N LOAD54U x MISS WERNING KP 8543U
EPDs: 14 -1.0 49 80 0.20 9 22 46.2 10 11.2
Carcass: 16.9 -0.51 0.02 0.078 1.07 121 62

CLRS ARCHIE 136 A

ASA#2735700 BD: 3-1-13 Tattoo: CLRS 136A



OWNED WITH
SPRINGS
CATTLE, MN

WS BEEF KING W107 x HOOK'S ULTIMATUM 36U
EPDs: 8 4.4 75 112 .23 8 22 60 12 11.9
Carcass: 42.5 -0.26 0.30 -0.043 0.86 129 76

KAPPES HAMMERTIME 90 C505

ASA#2970828 BD: 2-20-15 Tattoo: C505



OWNED WITH
NLC RANCH, SD

STF ROYAL AFFAIR Z44M x KAPPES SADIE T635
EPDs: 6 3.8 67 106 0.25 11 24 58 6 8.3
Carcass: 39.1 -0.45 -0.07 -0.079 1.15 97 64

TKCC CARVER 65C

ASA#3045230 BD: 2-25-15 Tattoo: 65C



OWNED WITH
CARVER
SYNDICATE

WS PILGRIM H182U x FORD RJ DOLLY Y83
EPDs: 11 1.6 60 81 0.13 10 22 52 13 10.2
Carcass: 20.4 -0.26 0.32 -0.027 0.72 134 70

KAPPES THUNDER 863 C523

ASA#2970845 BD: 2-26-15 Tattoo: C523



OWNED WITH
JACOBSON
LIVESTOCK, ND

LRS TURNING POINT 3117A x KAPPES SADIE T635 Z624
EPDs: 5 4.2 85 131 0.29 9 30 72 12 9.3
Carcass: 54.1 -0.48 0.14 -0.070 1.48 123 80

This sale will be
broadcast live
on the internet! **DVAuction**
Broadcasting Real-Time Auctions



Thank You from Kappes Simmental!

*WE LOOK FORWARD TO SEEING YOU ON
FEBRUARY 18TH!*



Scan this code with your smart phone
to view entire catalog online...
or type in this link: <http://edjesales.com/eberspacher/kappes/index.html>



ASSISTED DELIVERY TERMS: Kappes Simmentals will be happy to arrange the delivery of your sale purchase for the following guaranteed delivery fees. In order for us to guarantee these delivery fees, you must make arrangements to receive your purchased animals when Kappes Simmentals has a delivery truck coming through or into your area. If you are not available to receive your animals when our trailer is delivering in your area, you will need to make arrangements to pick up your animals at your convenience at Kappes Simmentals.
CALL FOR VOLUME DISCOUNTS.

- South Dakota, North Dakota, Minnesota, Montana, & Nebraska Bulls delivered free of charge
- South Dakota, North Dakota, Minnesota, Montana, & Nebraska Heifers \$50/Head
- All Other Central Time Zone States, Mountain Standard Time Zone States in Continental US \$300/head
- Pacific Time Zone & Eastern Time Zone States In Continental US \$400/head

Kappes Simmental

Maternally **DRIVEN** Performance **DELIVERED**

Saturday, February 18, 2017 • 11:59 AM Sharp!

Aberdeen Livestock Sales Co. (West Barn) • 38458 133rd Street • Aberdeen, SD 57401

Eberspacher
ENTERPRISES INC.

2904 Co Rd 6, Marshall, MN 56258

First Class Mail: Time Dated Material!

First Class
U.S. Postage
PAID
Marshall, MN
Permit #86